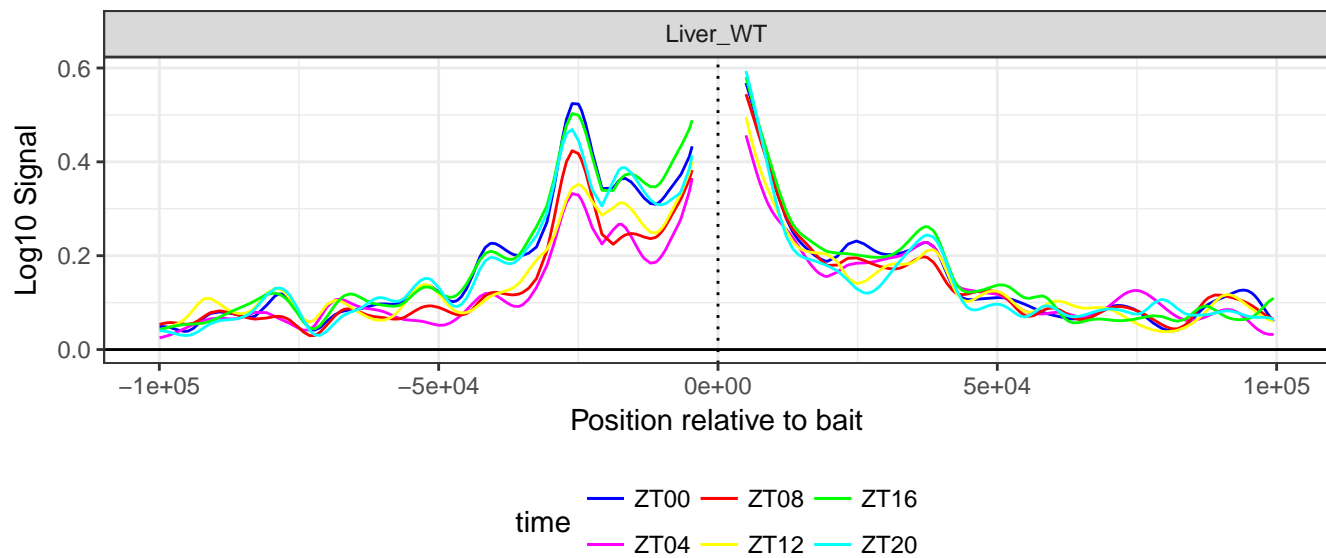
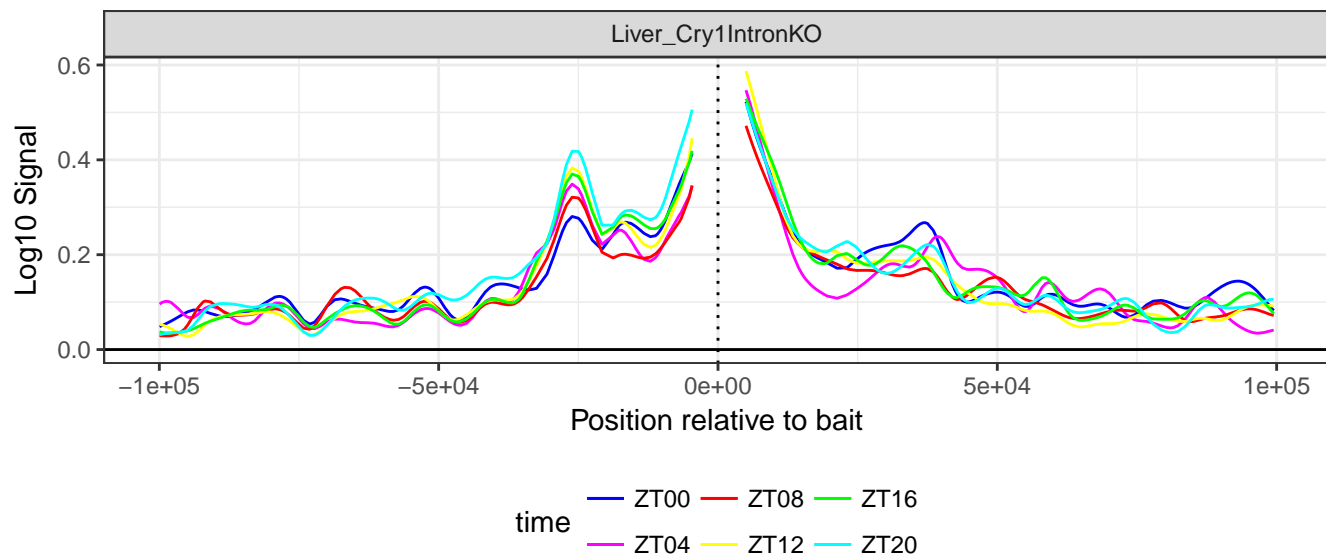


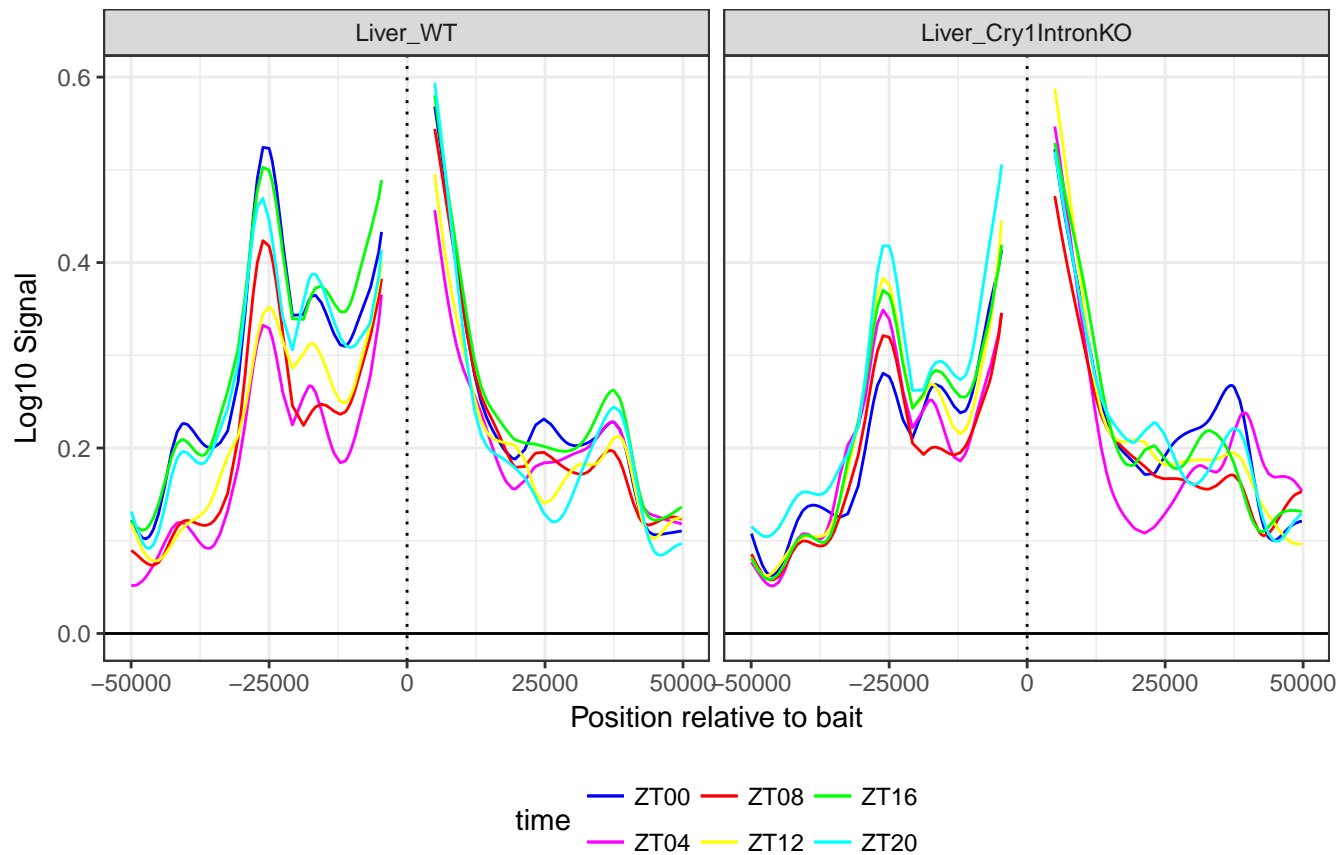
## Cry1 Around the Clock

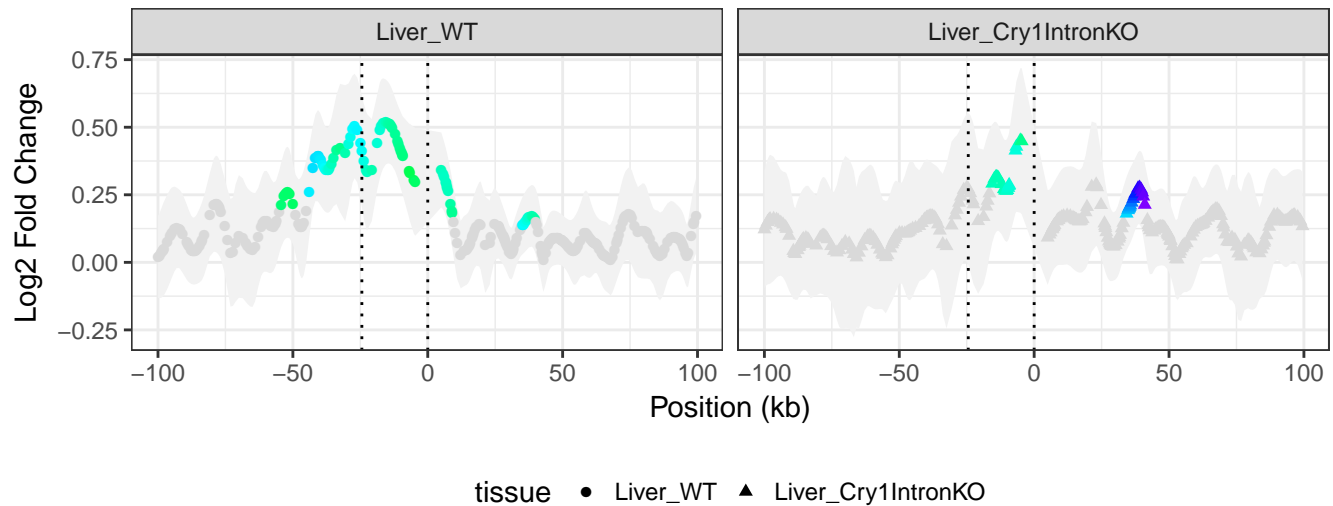


## Cry1 Around the Clock

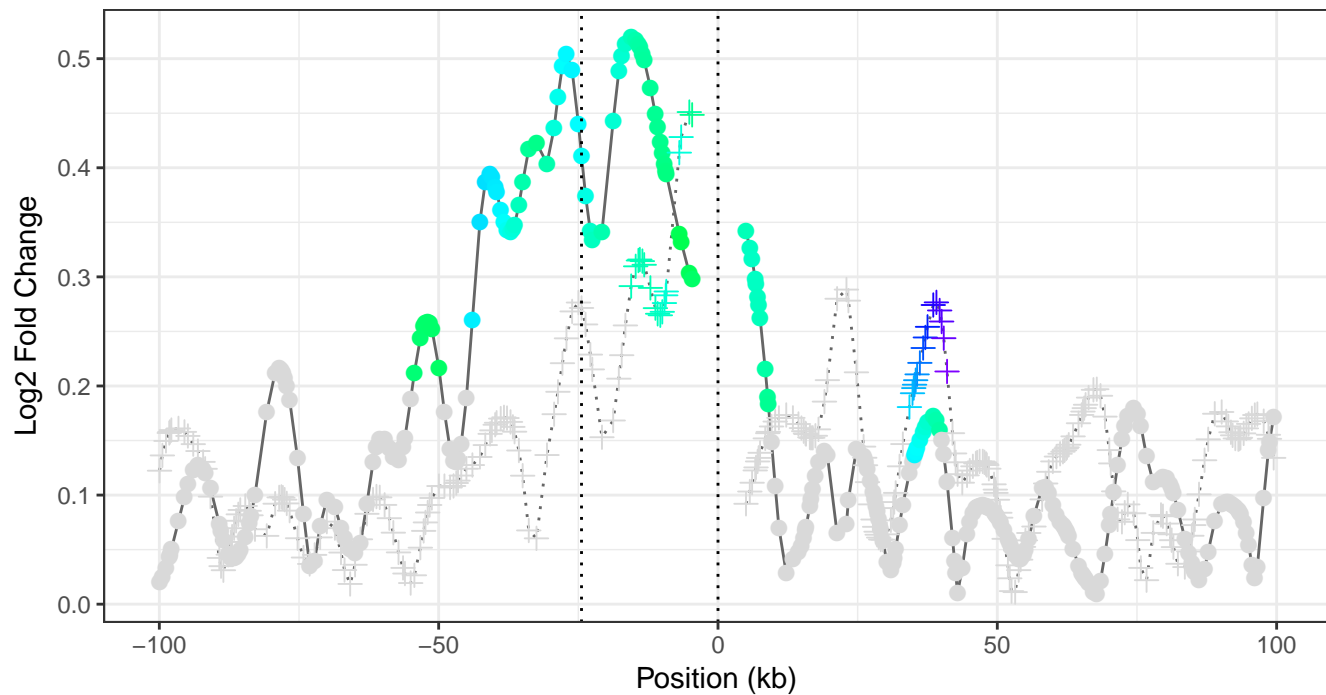


# Cry1 Around the Clock



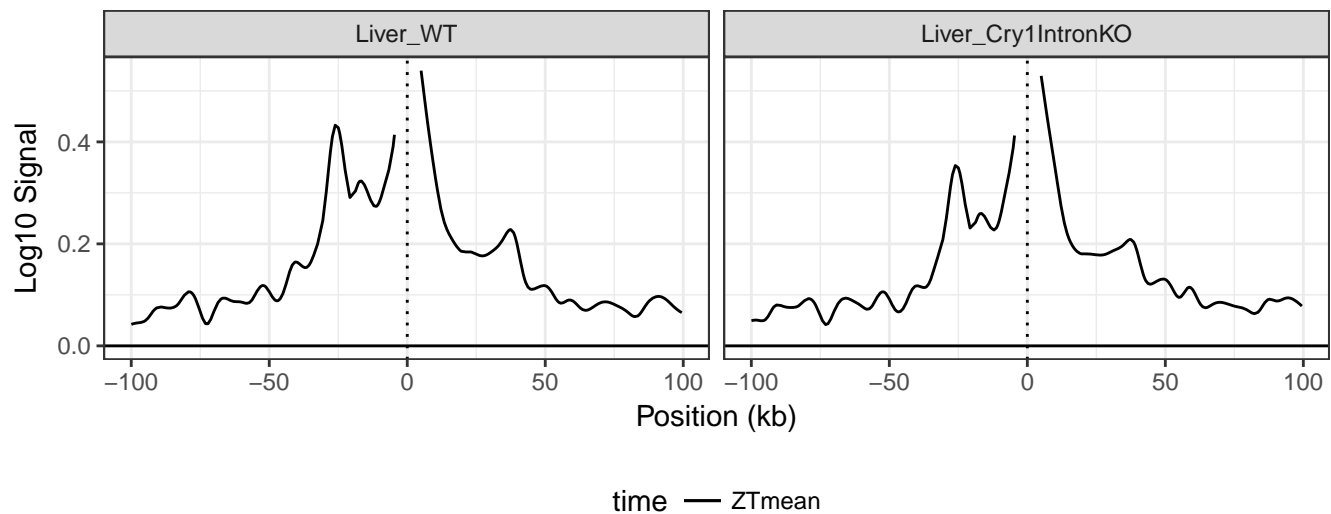


# Amplitudes

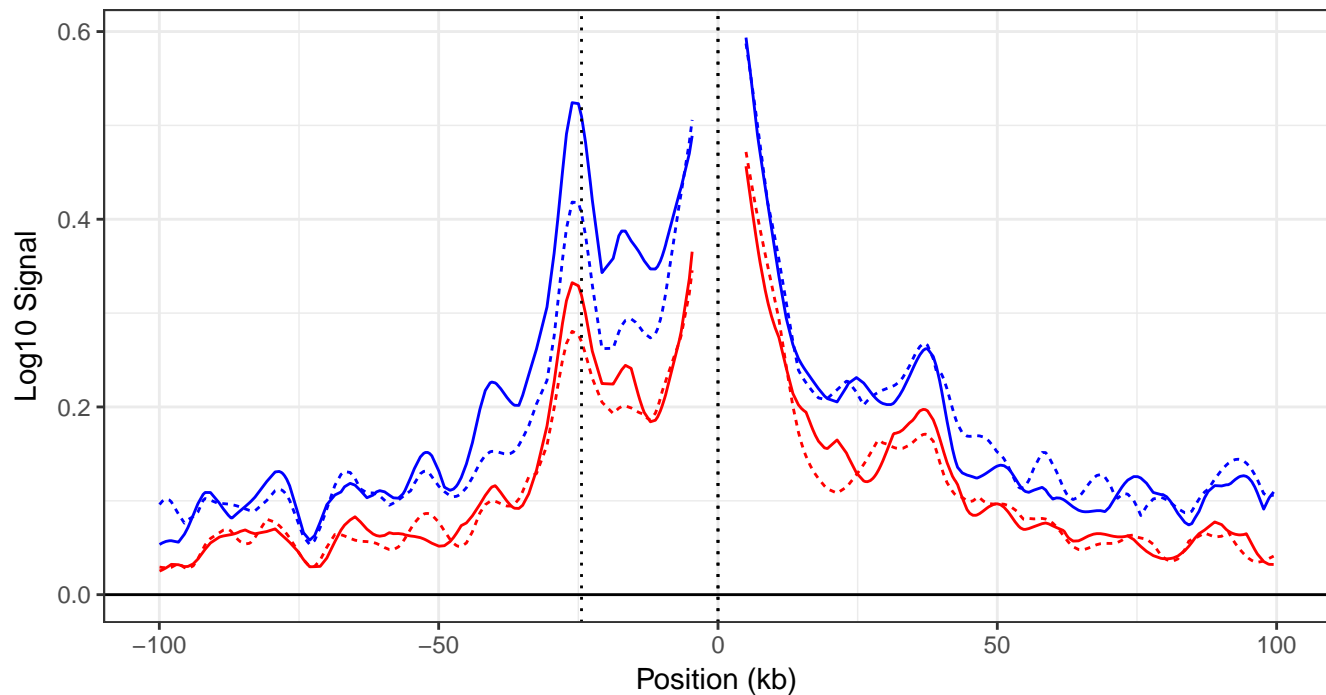


tissue ● Liver\_WT + Liver\_Cry1IntronKO

## Cry1 Around the Clock

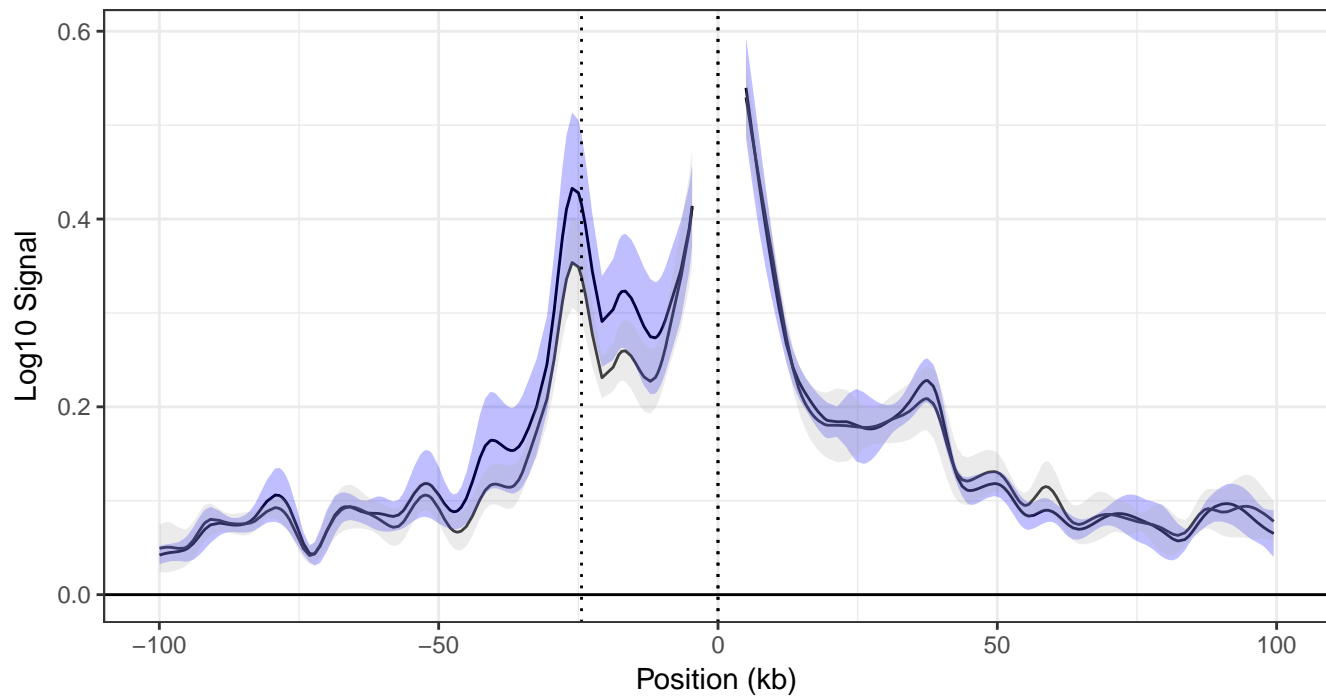


Max and min of 4C signal



time    Liver\_WT    Liver\_Cry1IntronKO    genotype    — Liver\_WT    - - - Liver\_Cry1IntronKO

Mean log10 4C signal

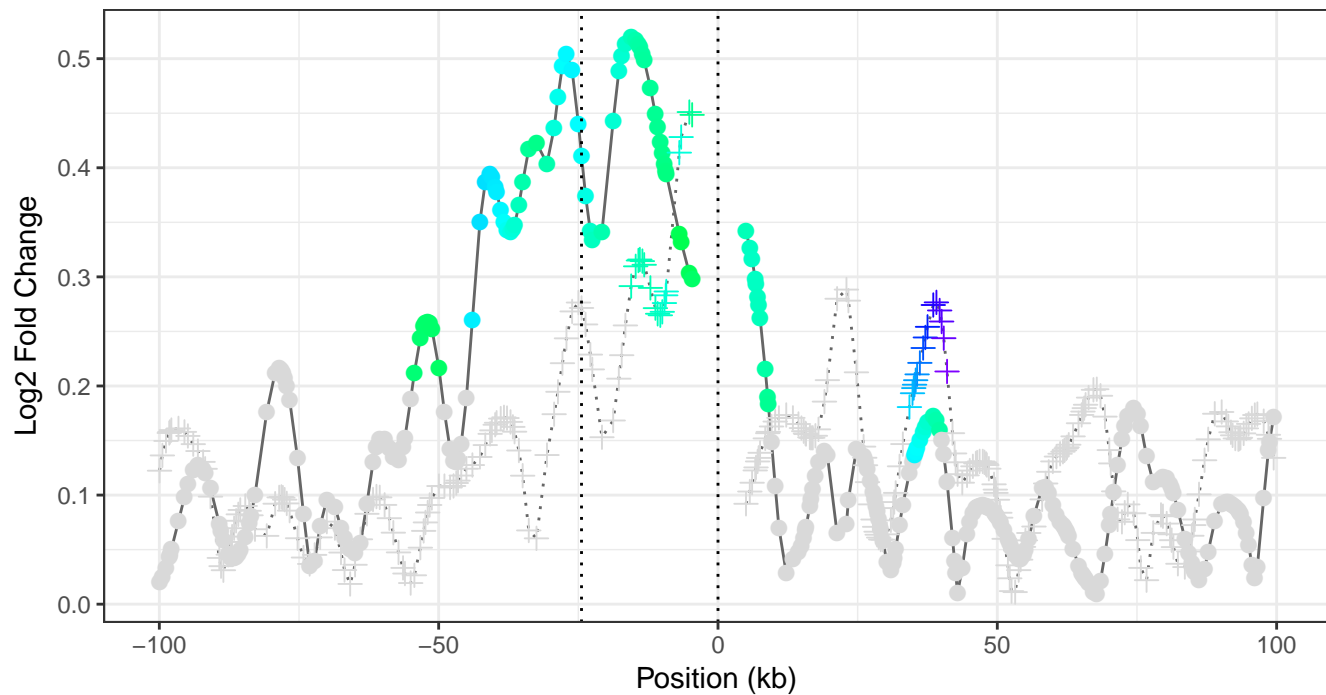


time — Liver\_WT — Liver\_Cry1IntronKO

genotype ■ Liver\_WT ■ Liver\_Cry1IntronKO

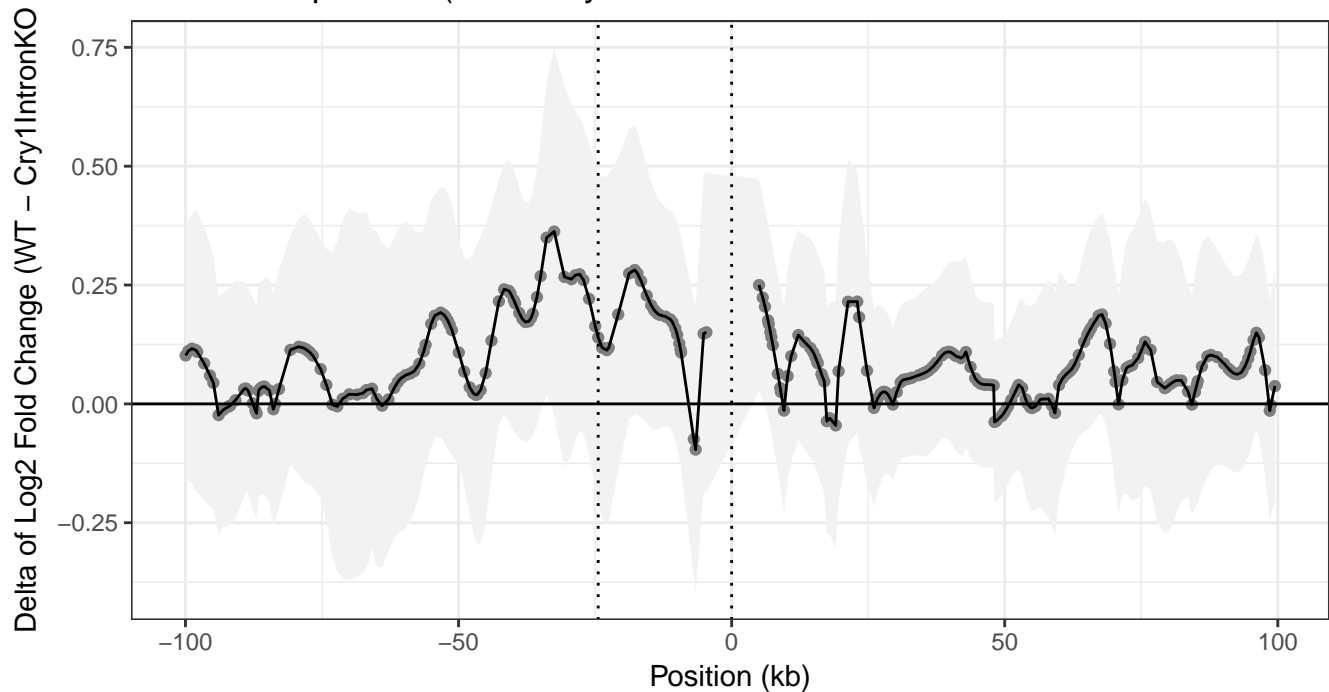


# Amplitudes

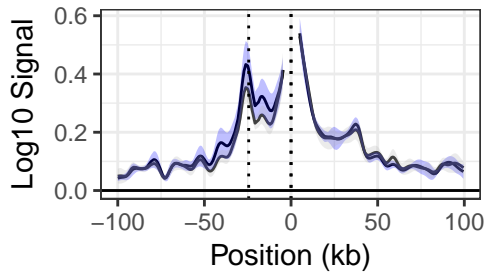


tissue ● Liver\_WT + Liver\_Cry1IntronKO

Delta of Amplitudes (WT – Cry1IntronKO)

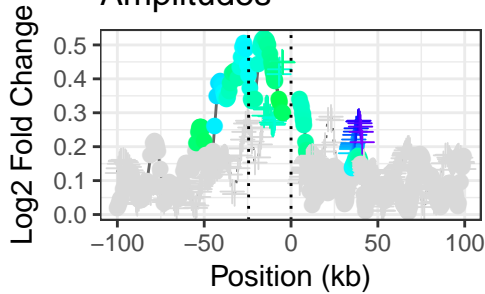


### Mean log10 4C signal



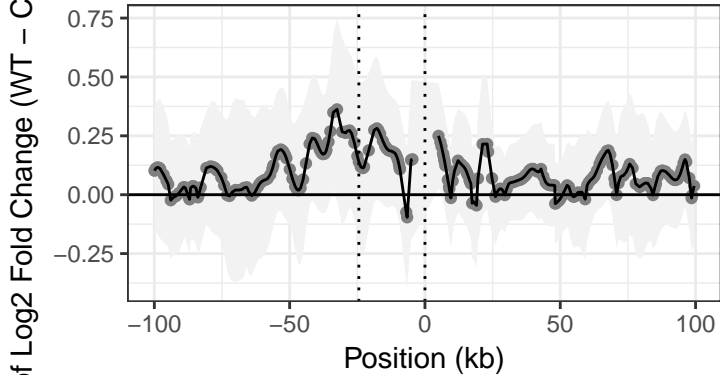
time — Liver\_WT — Liver\_Cry1IntronKO      genotype ■ Liver\_WT ■ Liver\_Cry1IntronKO

### Amplitudes

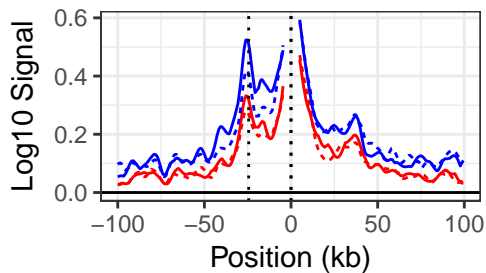


tissue ● Liver\_WT + Liver\_Cry1IntronKO

### Delta of Amplitudes (WT – Cry1IntronKO)

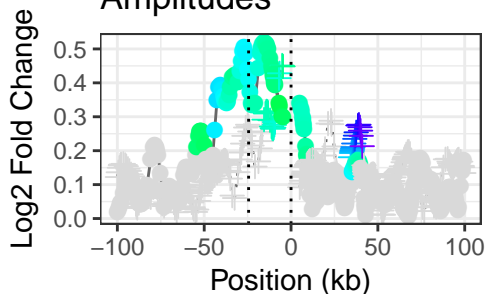


### Max and min of 4C signal



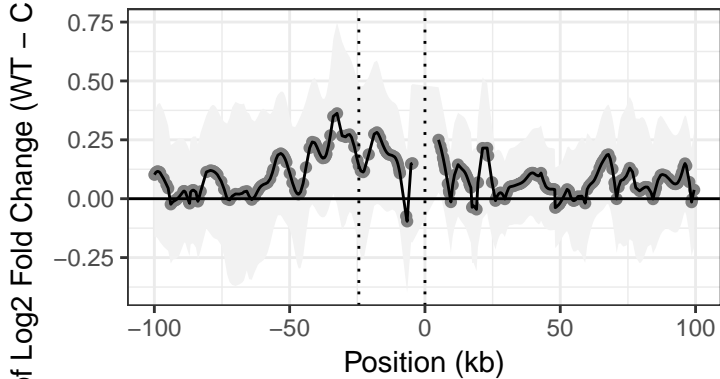
time    Liver\_WT    Liver\_Cry1IntronKO    genotype    — Liver\_WT    - - - Liver\_Cry1IntronKO

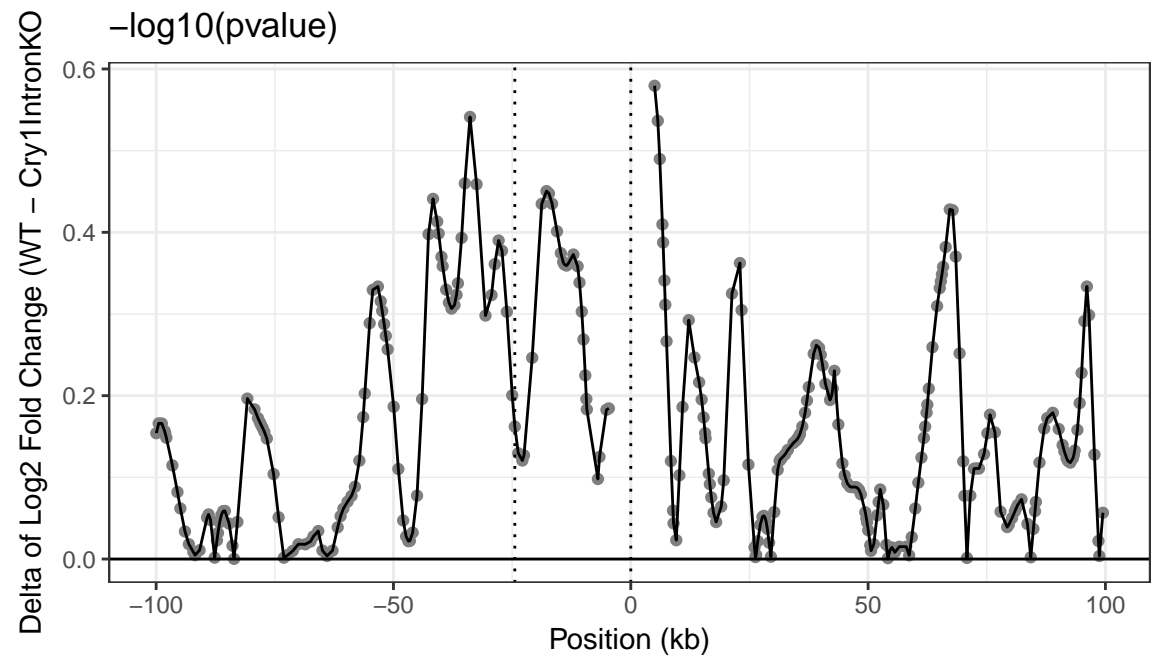
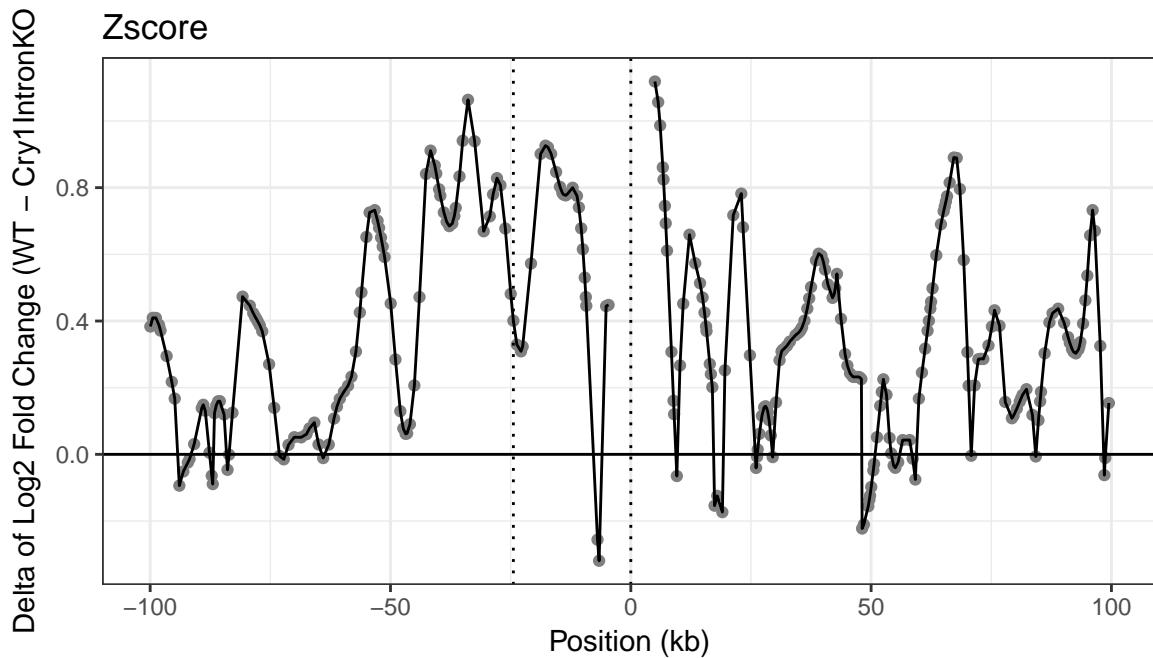
### Amplitudes

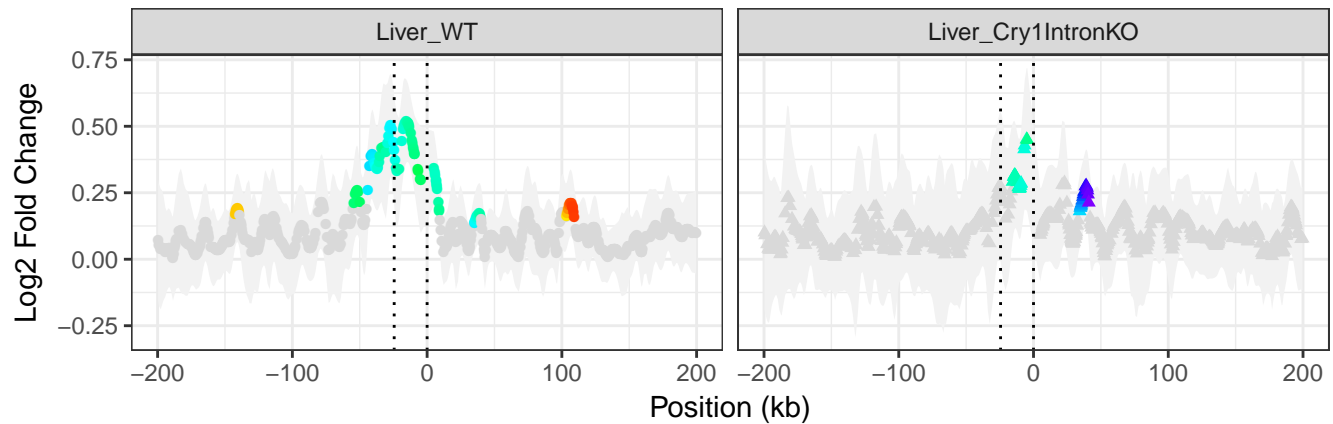


tissue    ● Liver\_WT    + Liver\_Cry1IntronKO

### Delta of Amplitudes (WT – Cry1IntronKO)

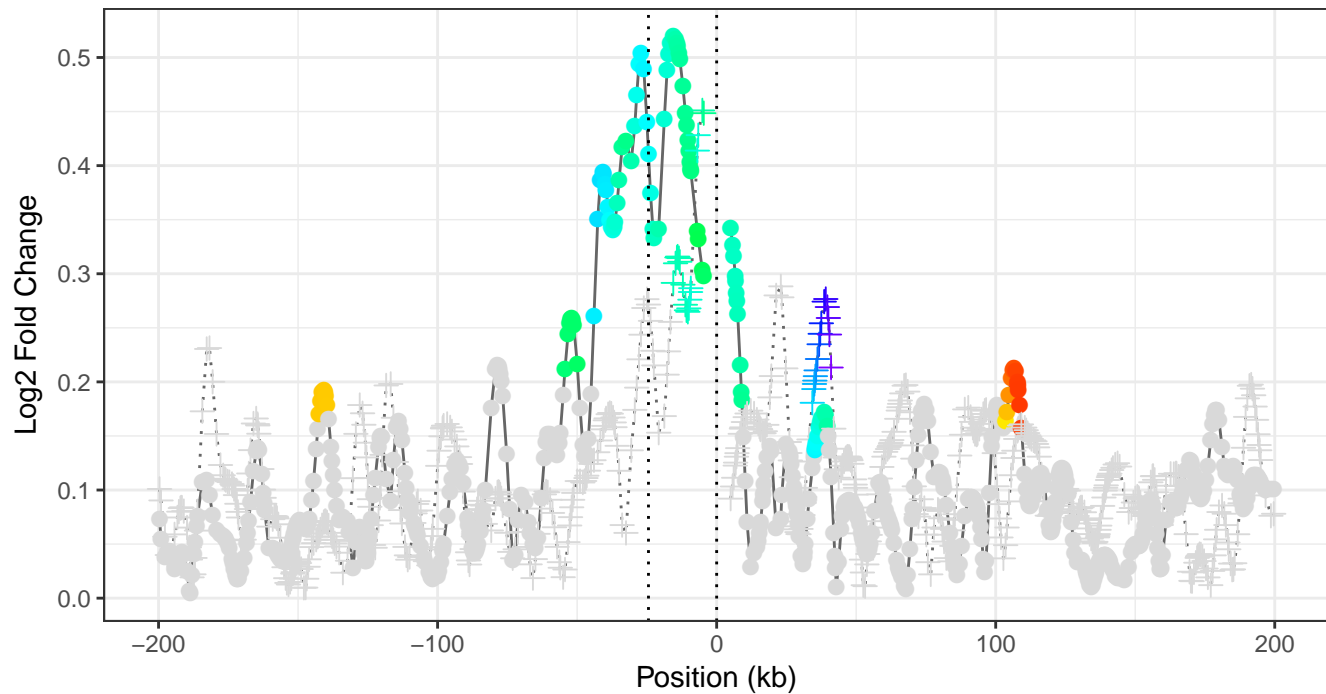






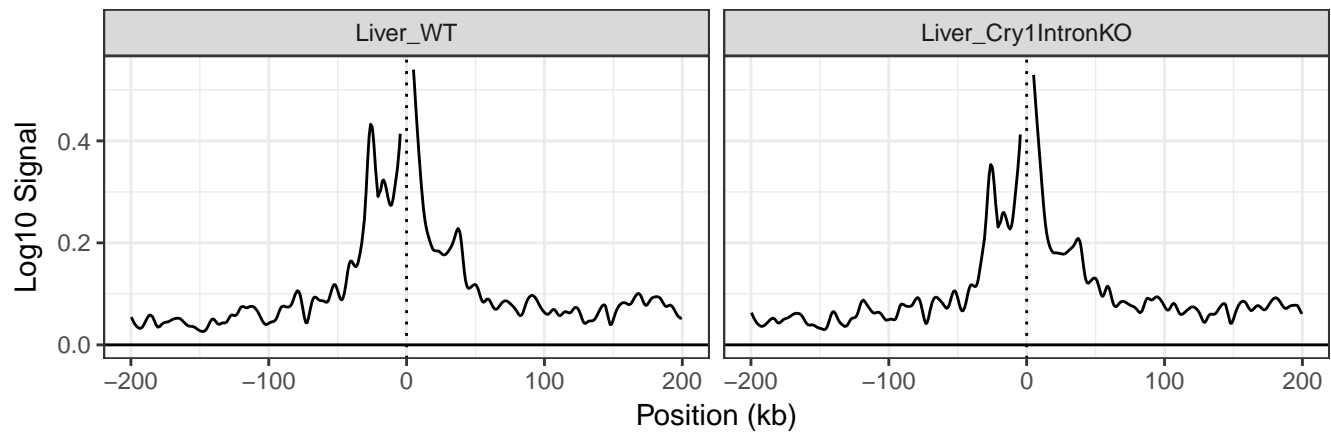
tissue • Liver\_WT ▲ Liver\_Cry1IntronKO

# Amplitudes



tissue ● Liver\_WT + Liver\_Cry1IntronKO

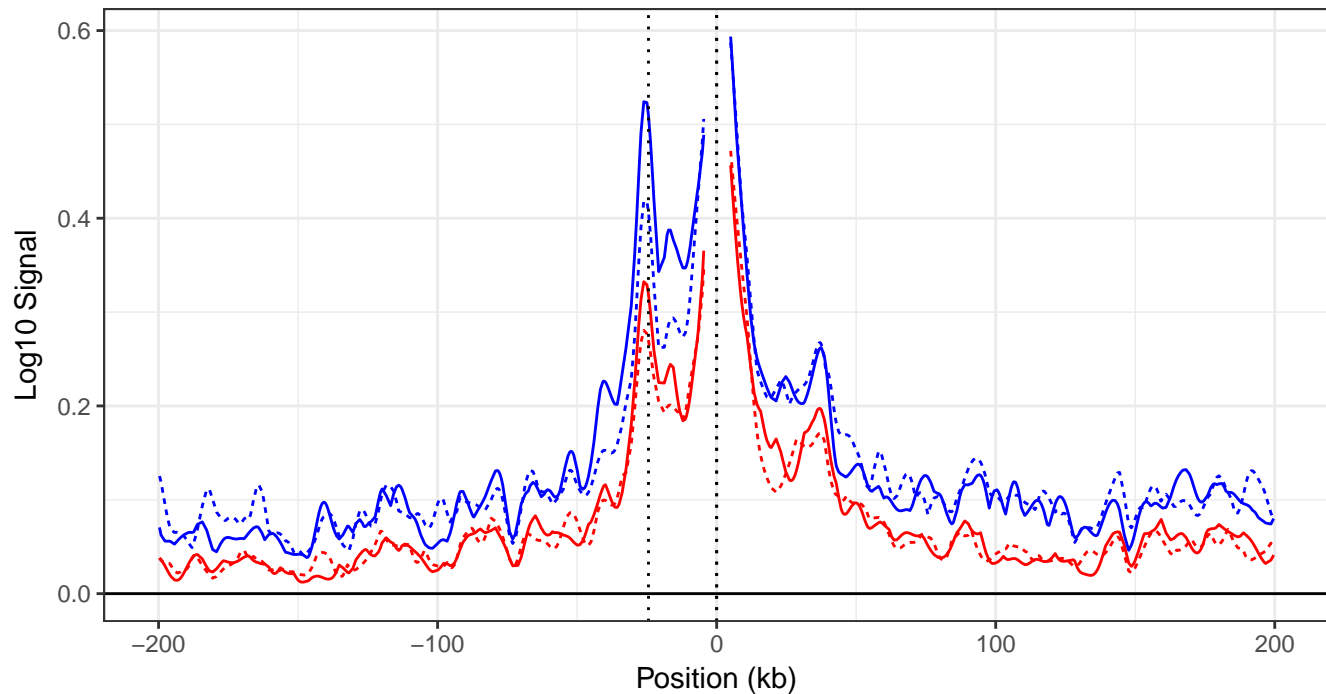
## Cry1 Around the Clock



time — ZTmean



### Max and min of 4C signal



time

Liver\_WT

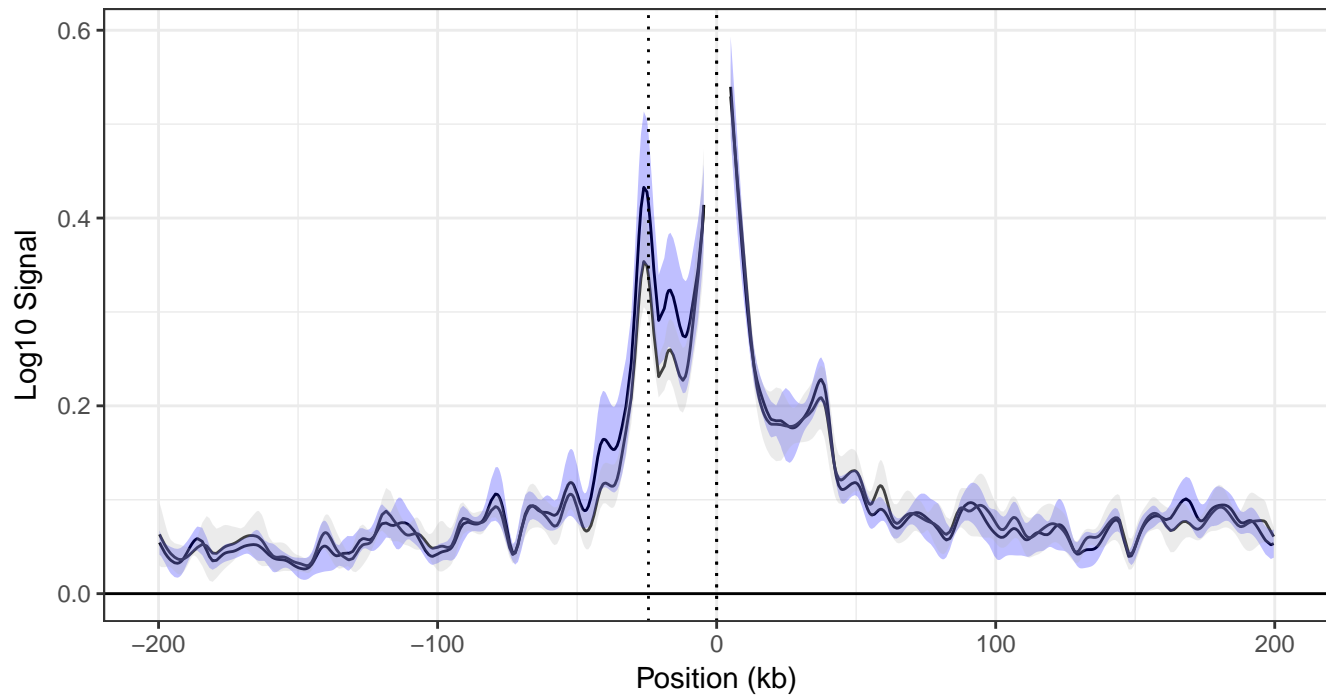
Liver\_Cry1IntronKO

genotype

— Liver\_WT

- - - Liver\_Cry1IntronKO

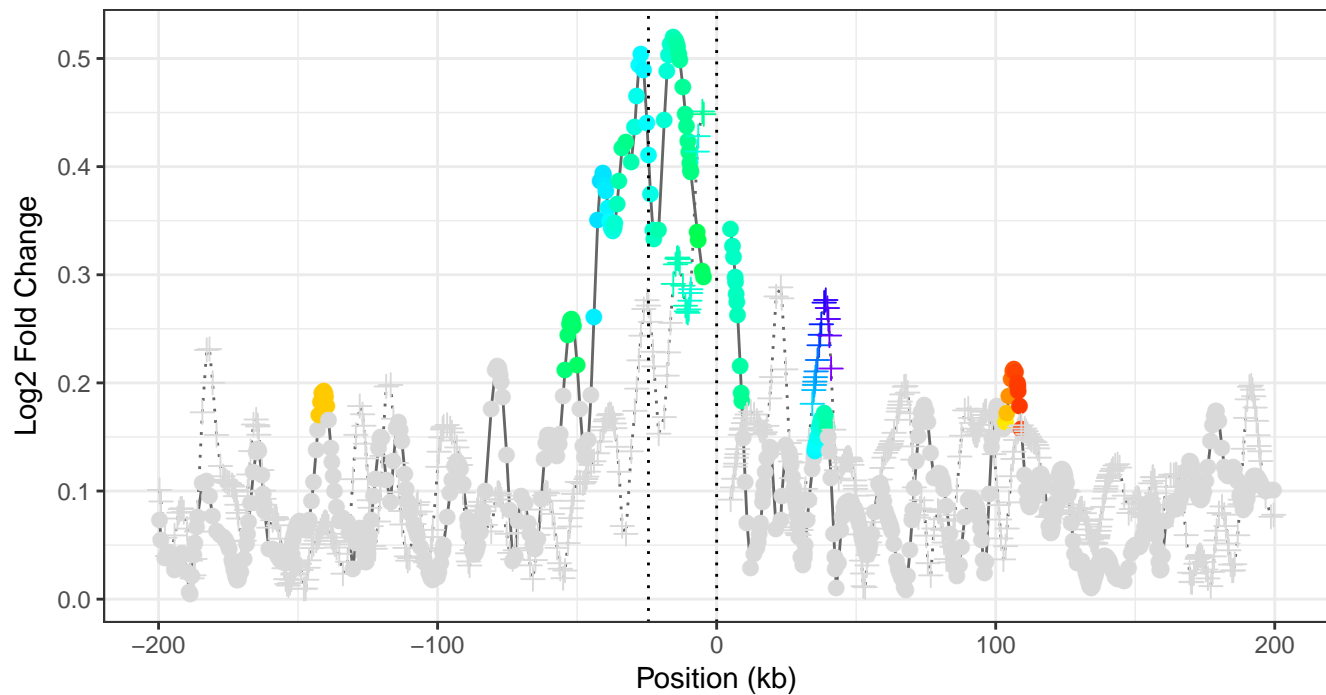
# Mean log10 4C signal



time — Liver\_WT — Liver\_Cry1IntronKO

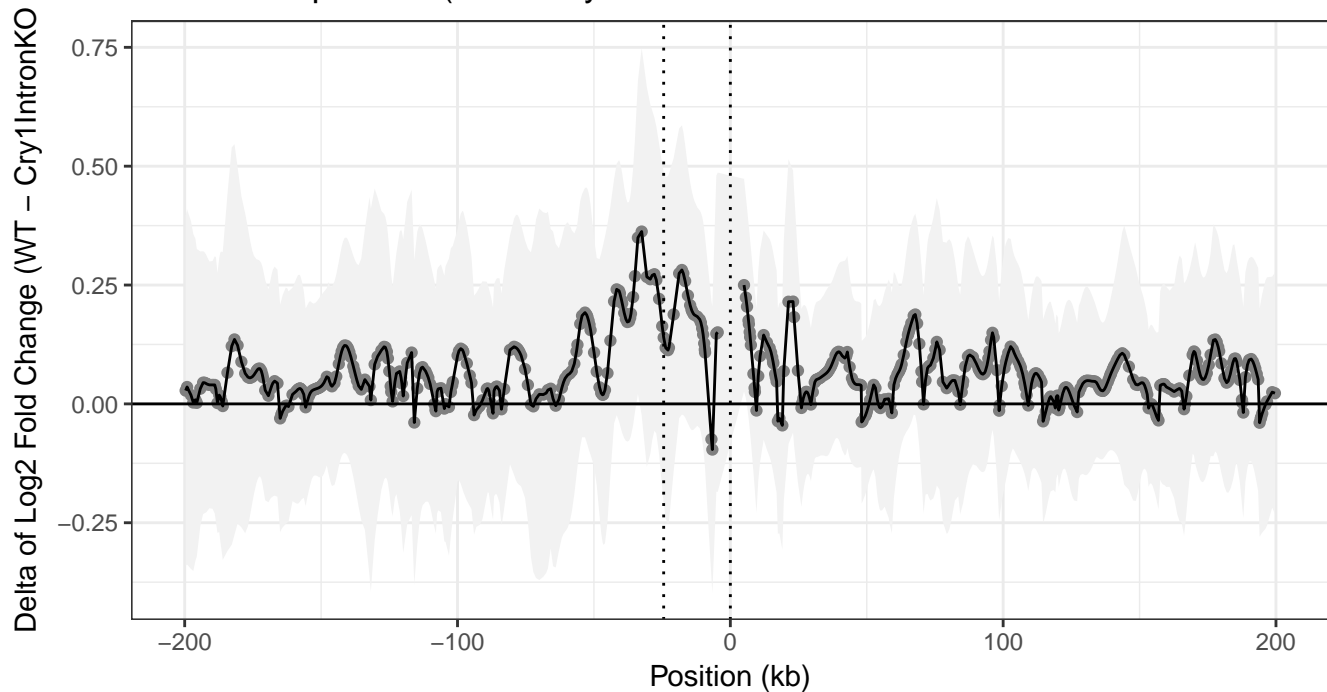
genotype ■ Liver\_WT ■ Liver\_Cry1IntronKO

# Amplitudes

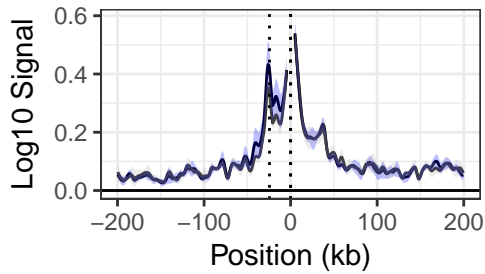


tissue ● Liver\_WT + Liver\_Cry1IntronKO

Delta of Amplitudes (WT – Cry1IntronKO)

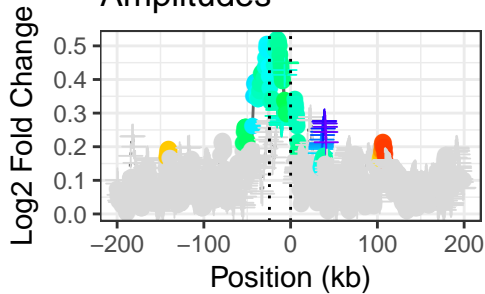


### Mean log10 4C signal



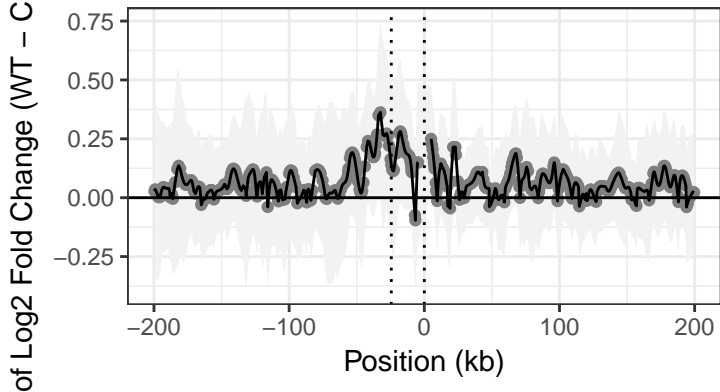
time — Liver\_WT — Liver\_Cry1IntronKO      genotype ■ Liver\_WT ■ Liver\_Cry1IntronKO

### Amplitudes

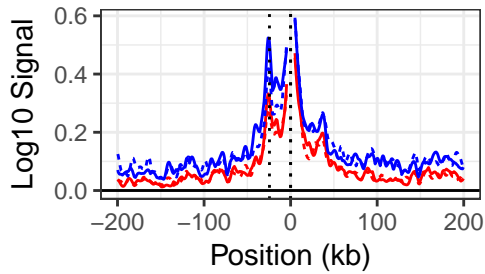


tissue ● Liver\_WT + Liver\_Cry1IntronKO

### Delta of Amplitudes (WT – Cry1IntronKO)

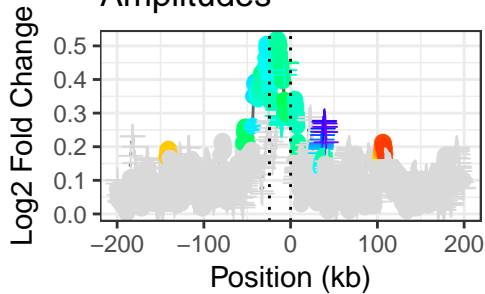


### Max and min of 4C signal



time      Liver\_WT      Liver\_Cry1IntronKO      genotype      — Liver\_WT      - - - Liver\_Cry1IntronKO

### Amplitudes



tissue      ● Liver\_WT      + Liver\_Cry1IntronKO

### Delta of Amplitudes (WT – Cry1IntronKO)

