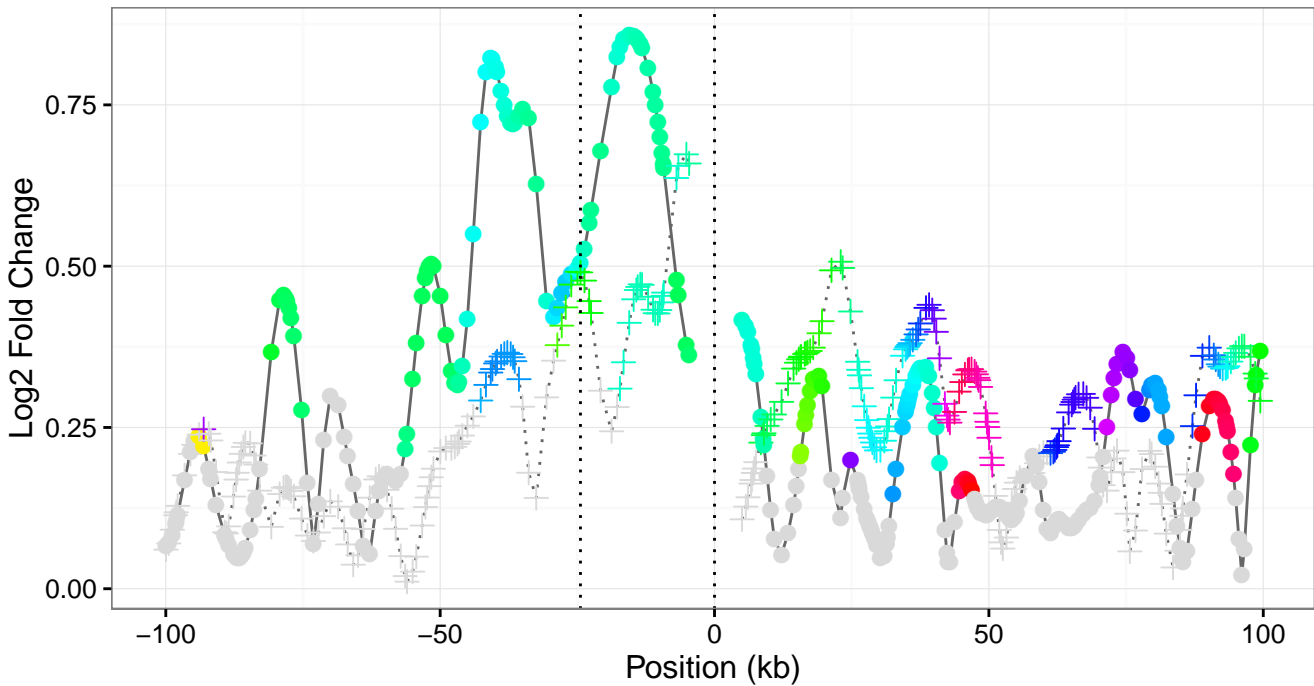
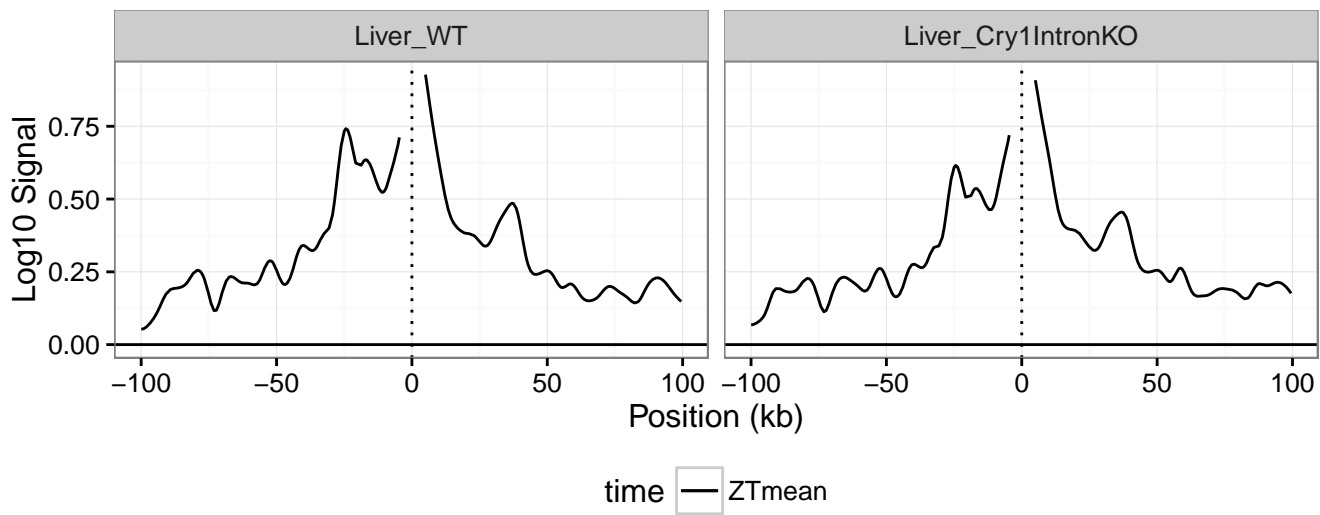


Amplitudes

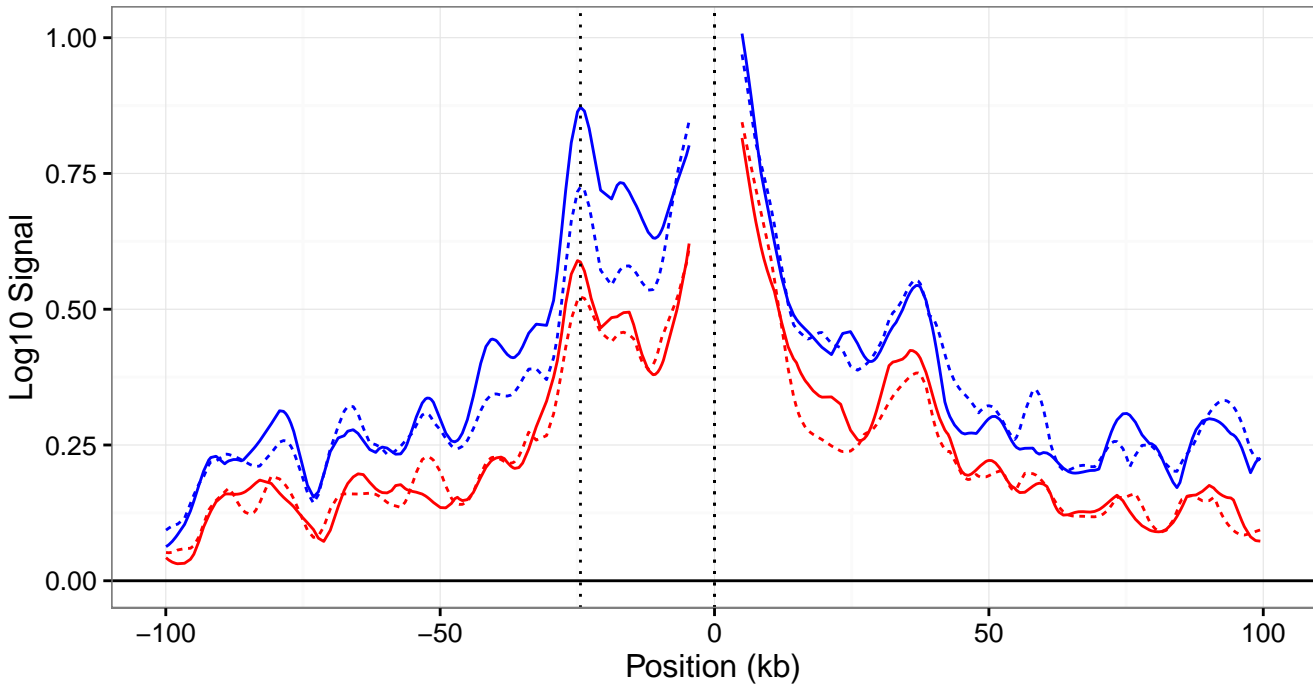


tissue ● Liver_WT + Liver_Cry1IntronKO

Cry1 Around the Clock



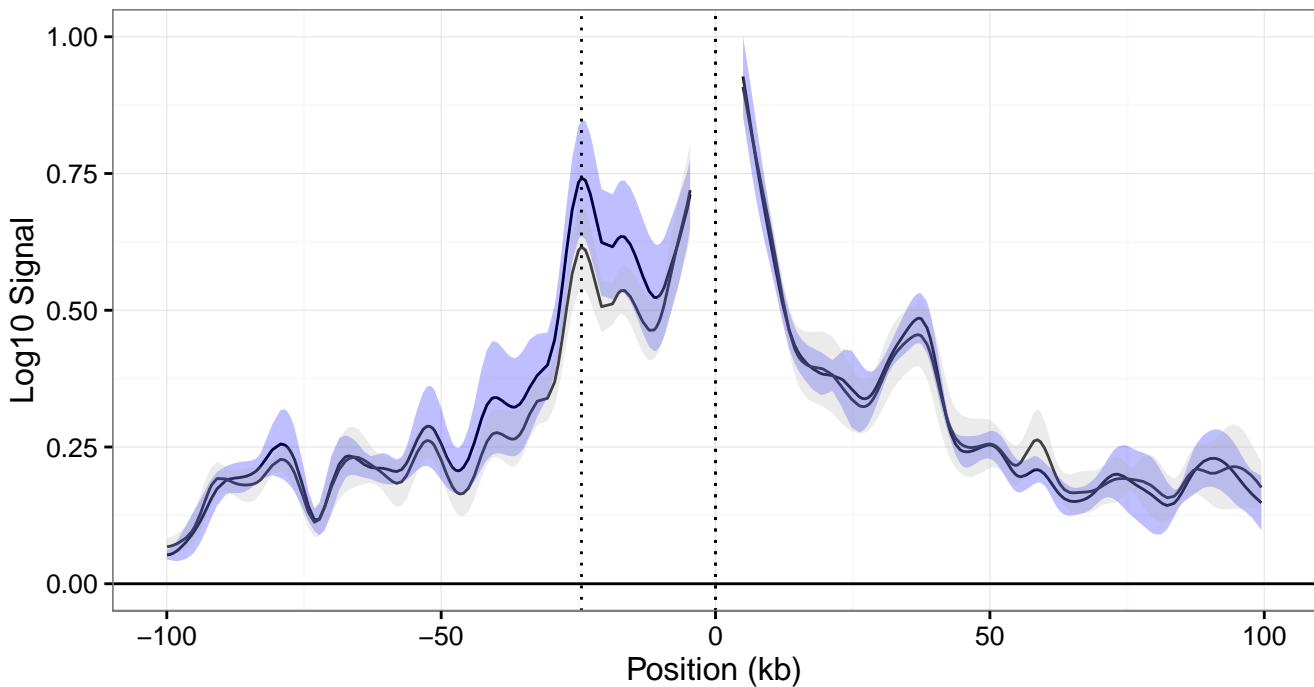
Max and min of 4C signal

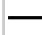



time Liver_WT Liver_Cry1IntronKO

genotype Liver_WT Liver_Cry1IntronKO

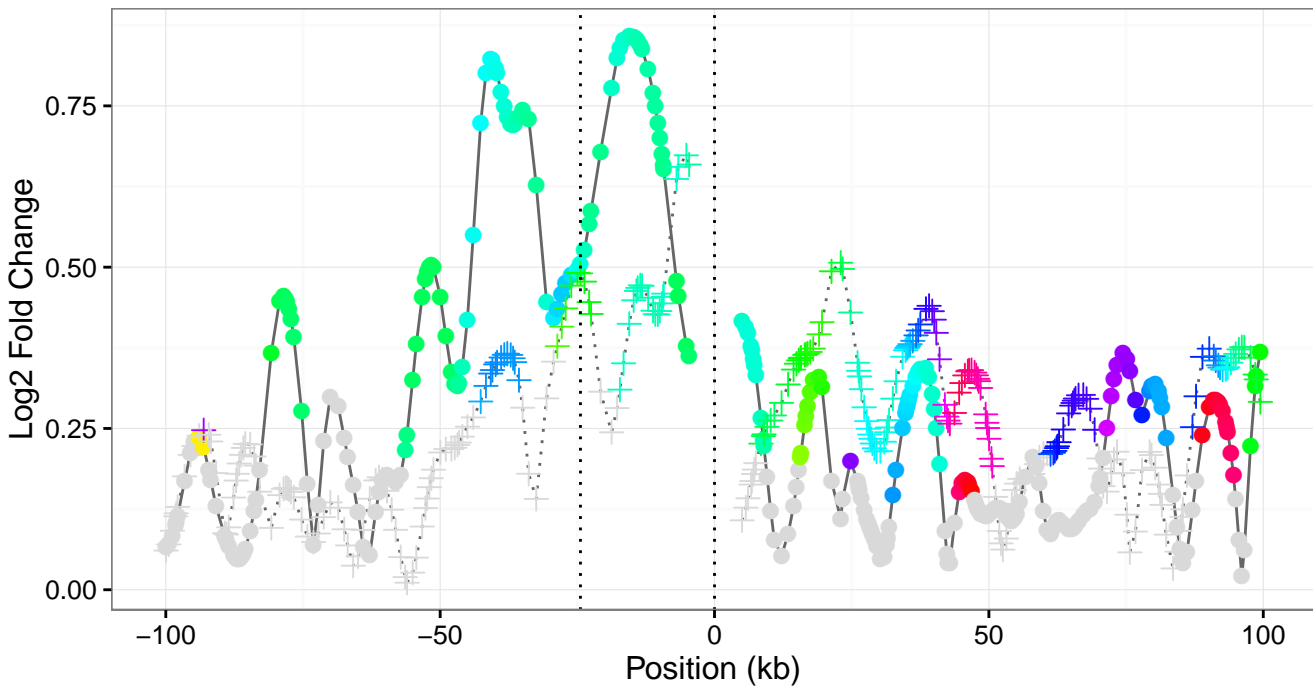
Mean log10 4C signal



time  Liver_WT  Liver_Cry1IntronKO

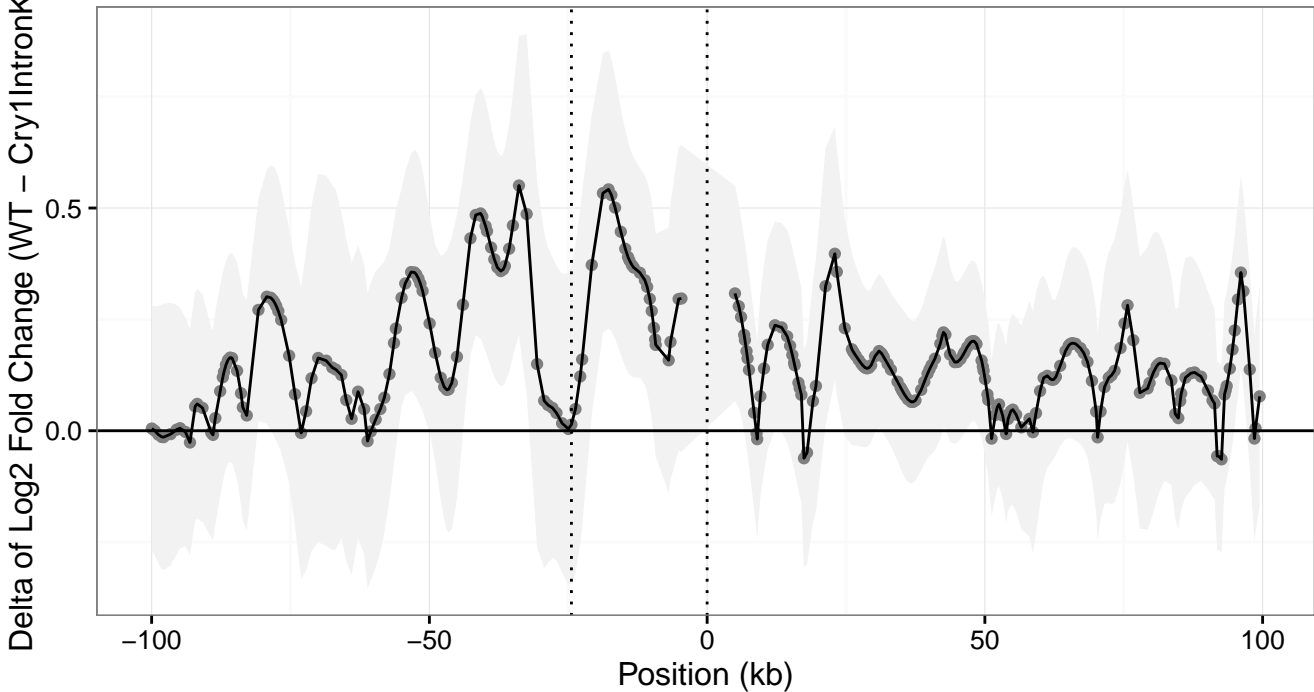
genotype  Liver_WT  Liver_Cry1IntronKO

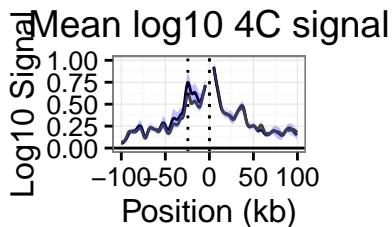
Amplitudes



tissue ● Liver_WT + Liver_Cry1IntronKO

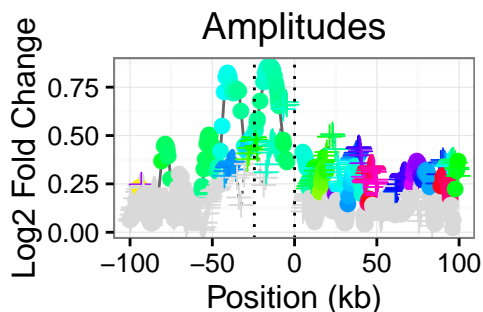
Delta of Amplitudes (WT – Cry1IntronKO)



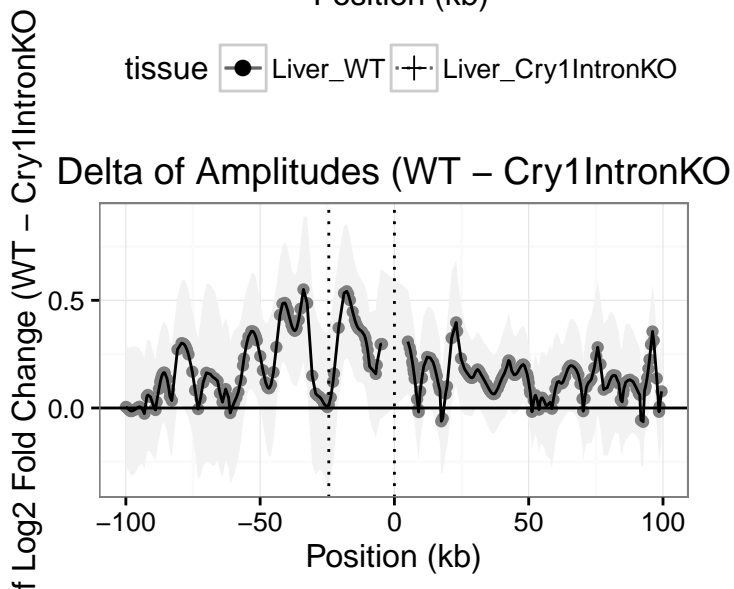


time Liver_WT Liver_Cry1IntronKO

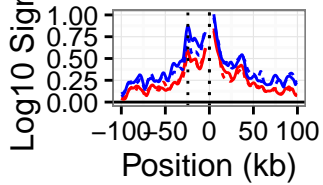
genotype Liver_WT Liver_Cry1IntronKO



tissue Liver_WT Liver_Cry1IntronKO

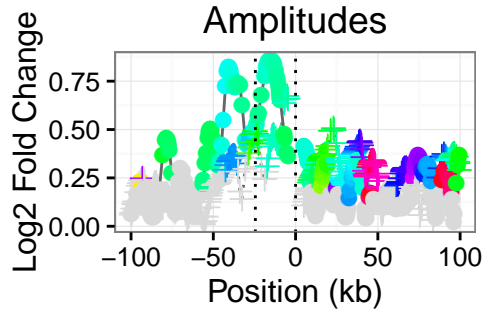


Max and min of 4C signal



time Liver_WT Liver_Cry1IntronKO

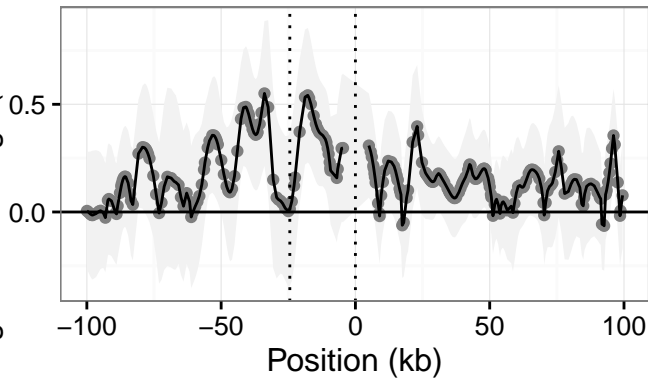
genotype Liver_WT Liver_Cry1IntronKO



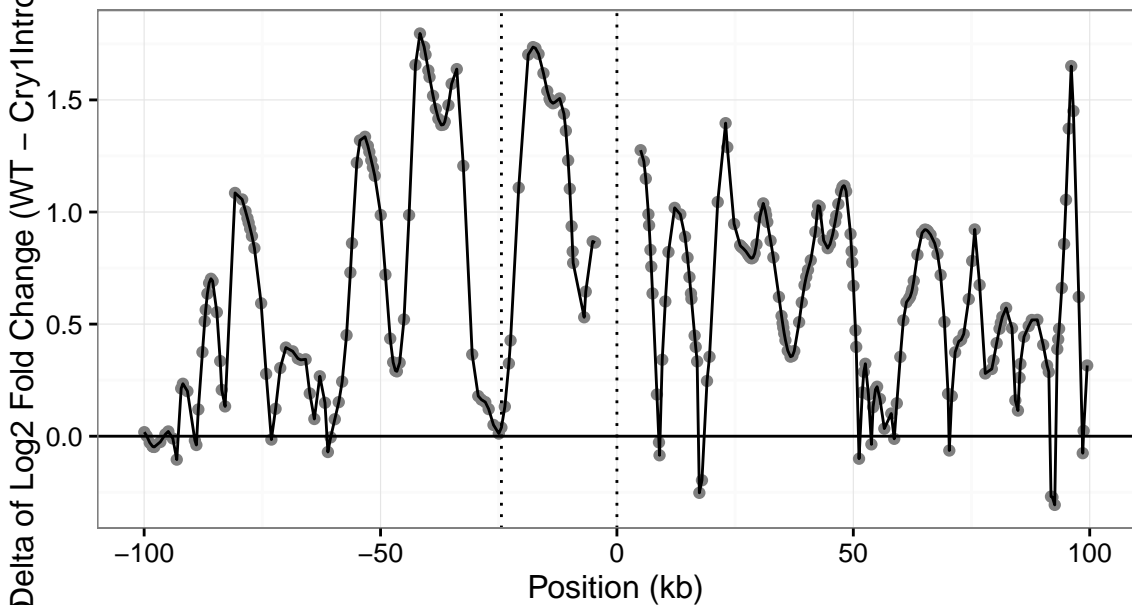
tissue Liver_WT Liver_Cry1IntronKO

Delta of Log2 Fold Change (WT - Cry1IntronKO)

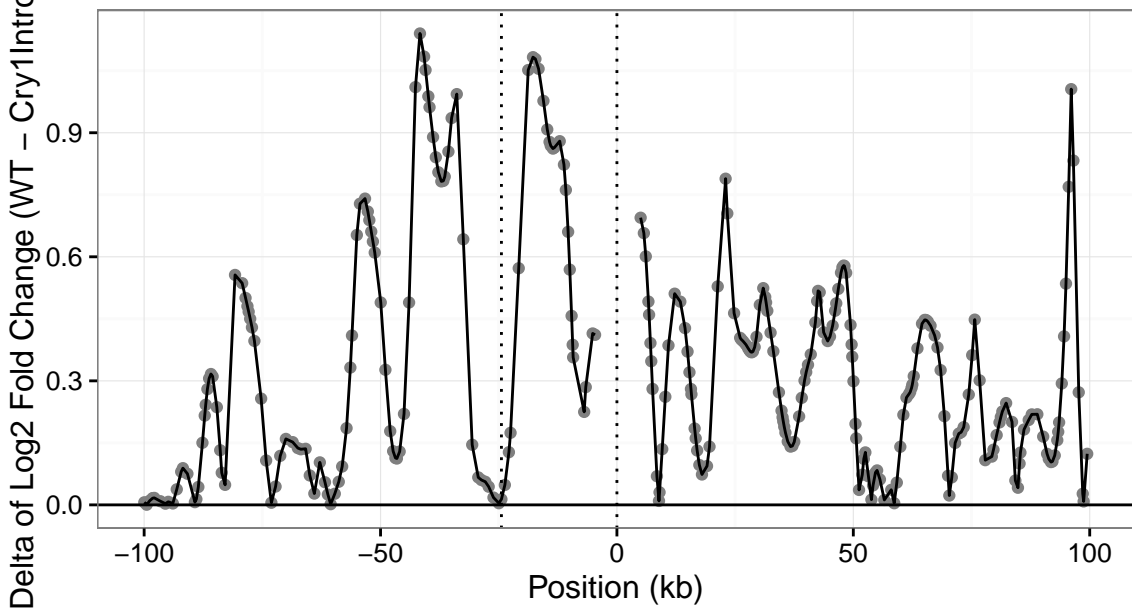
Delta of Amplitudes (WT - Cry1IntronKO)

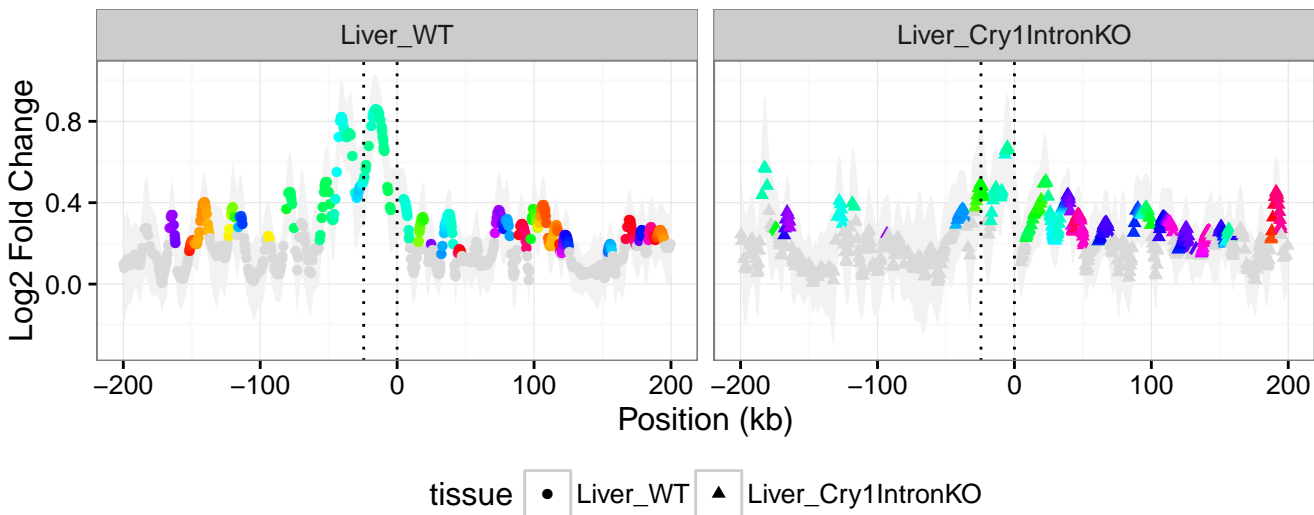


Zscore

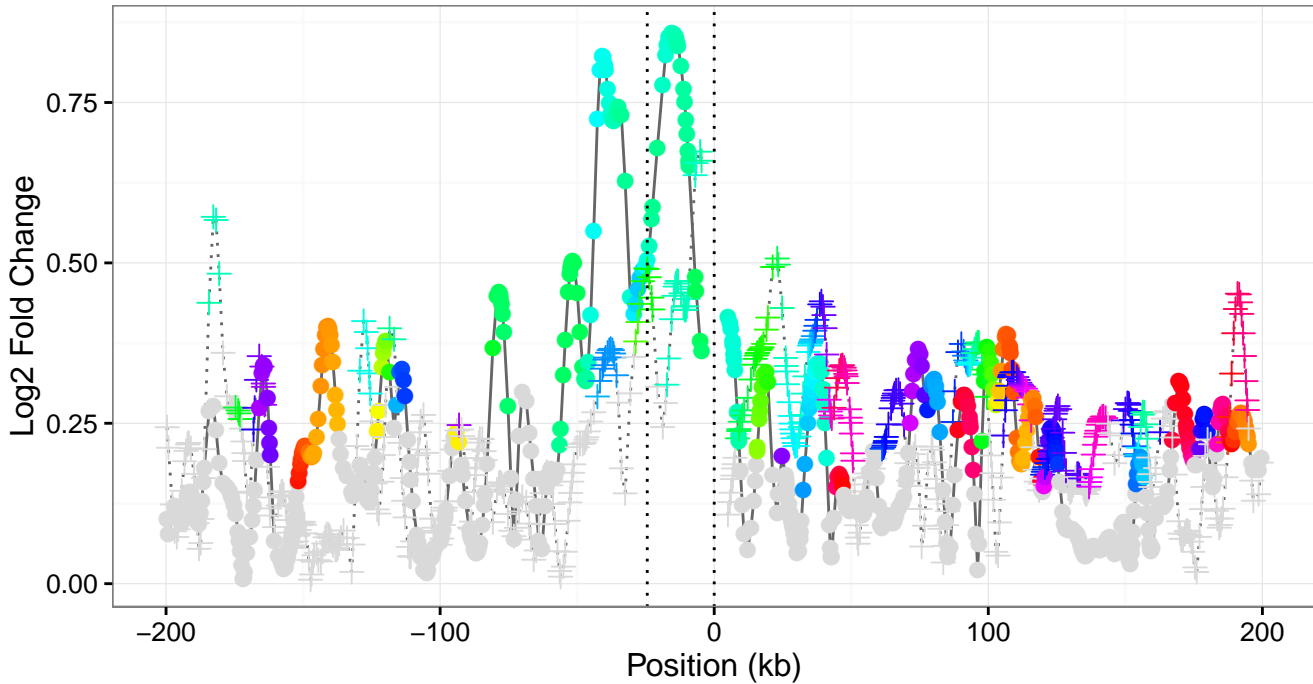


$-\log_{10}(\text{pvalue})$



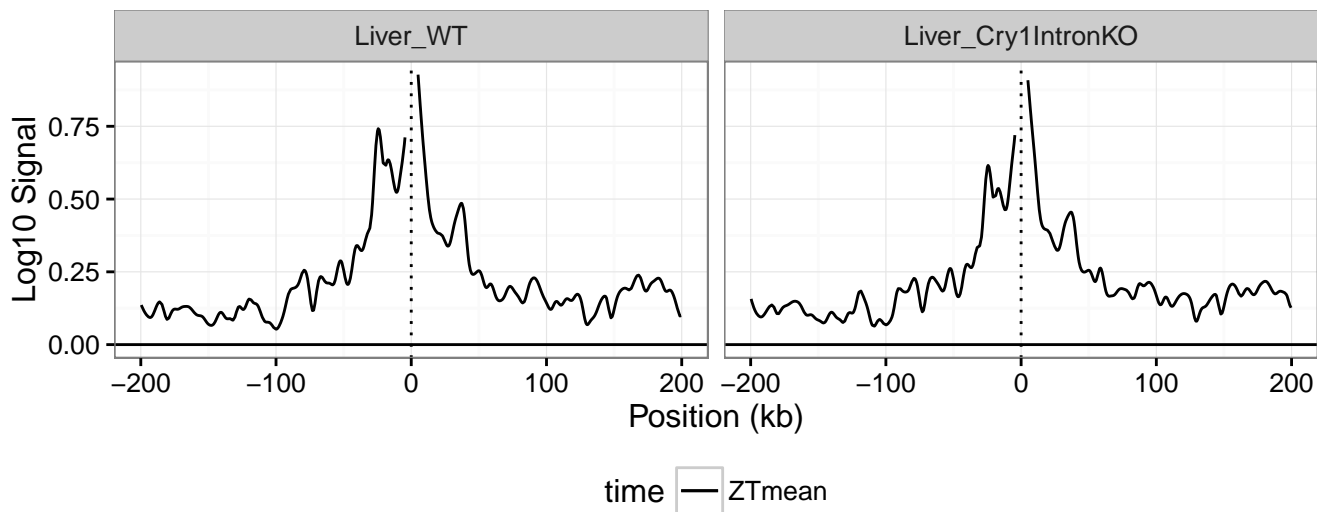


Amplitudes

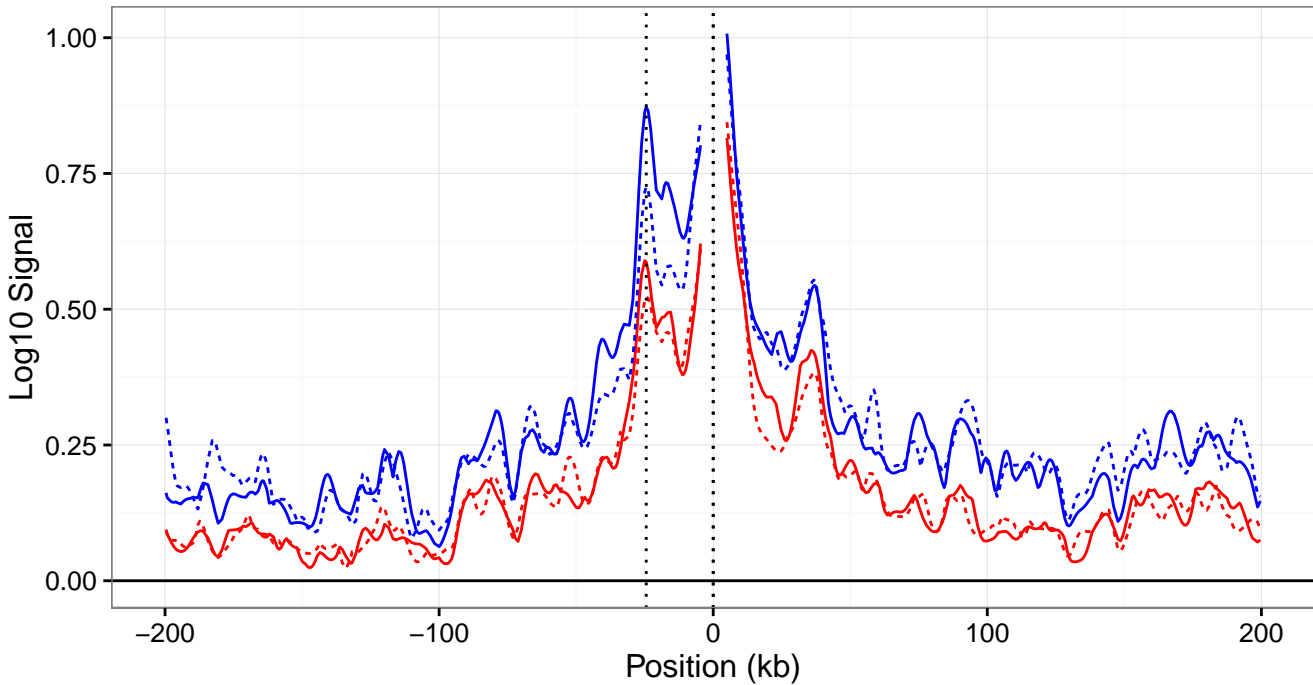


tissue ● Liver_WT + Liver_Cry1IntronKO

Cry1 Around the Clock



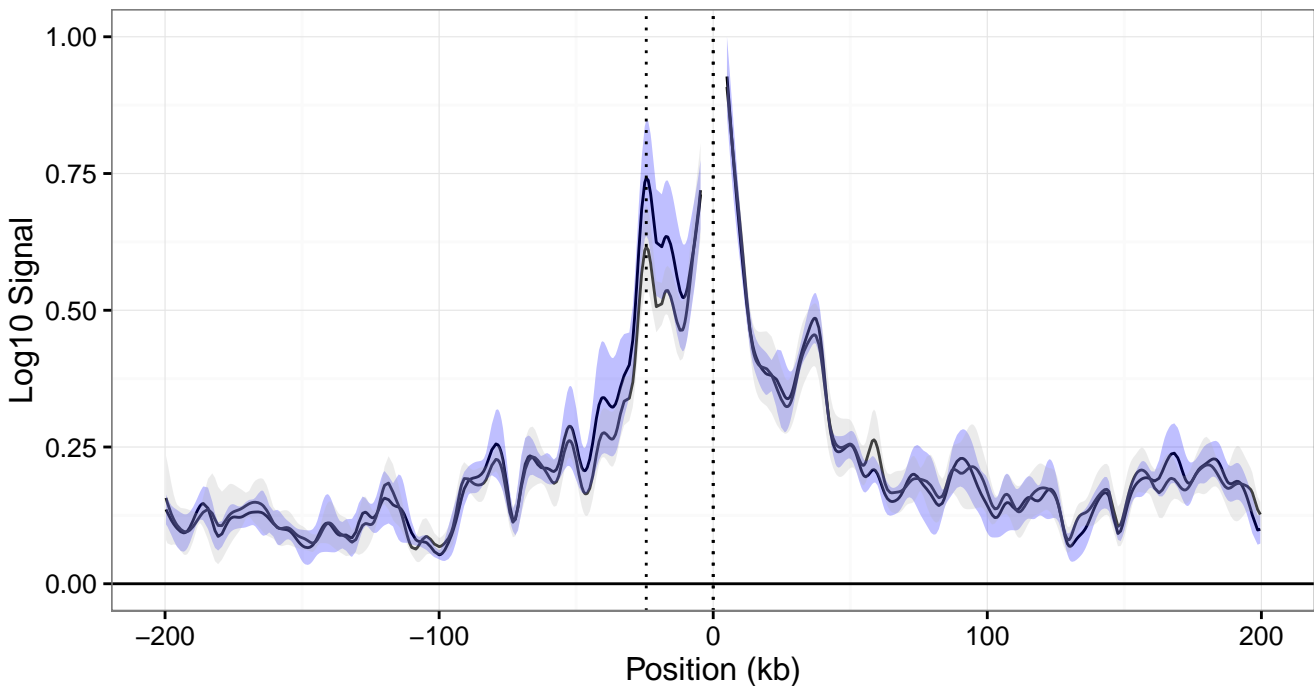
Max and min of 4C signal

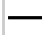



time Liver_WT Liver_Cry1IntronKO

genotype Liver_WT Liver_Cry1IntronKO

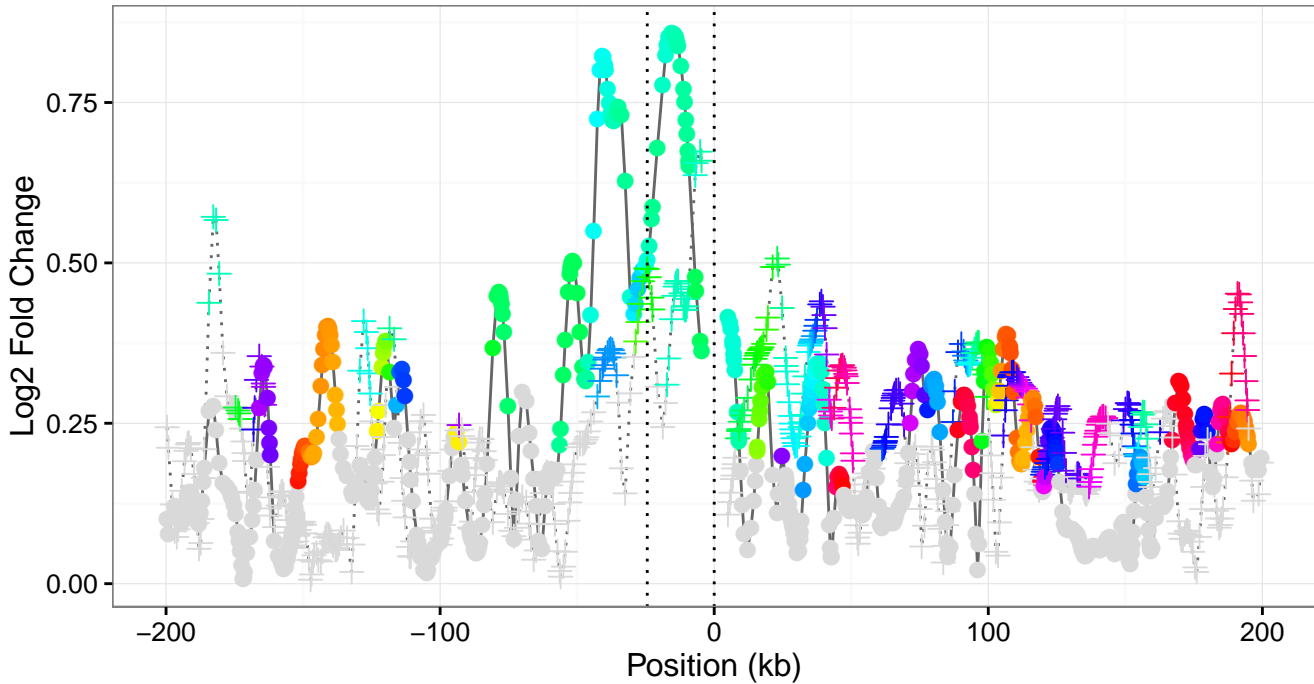
Mean log10 4C signal



time  Liver_WT  Liver_Cry1IntronKO

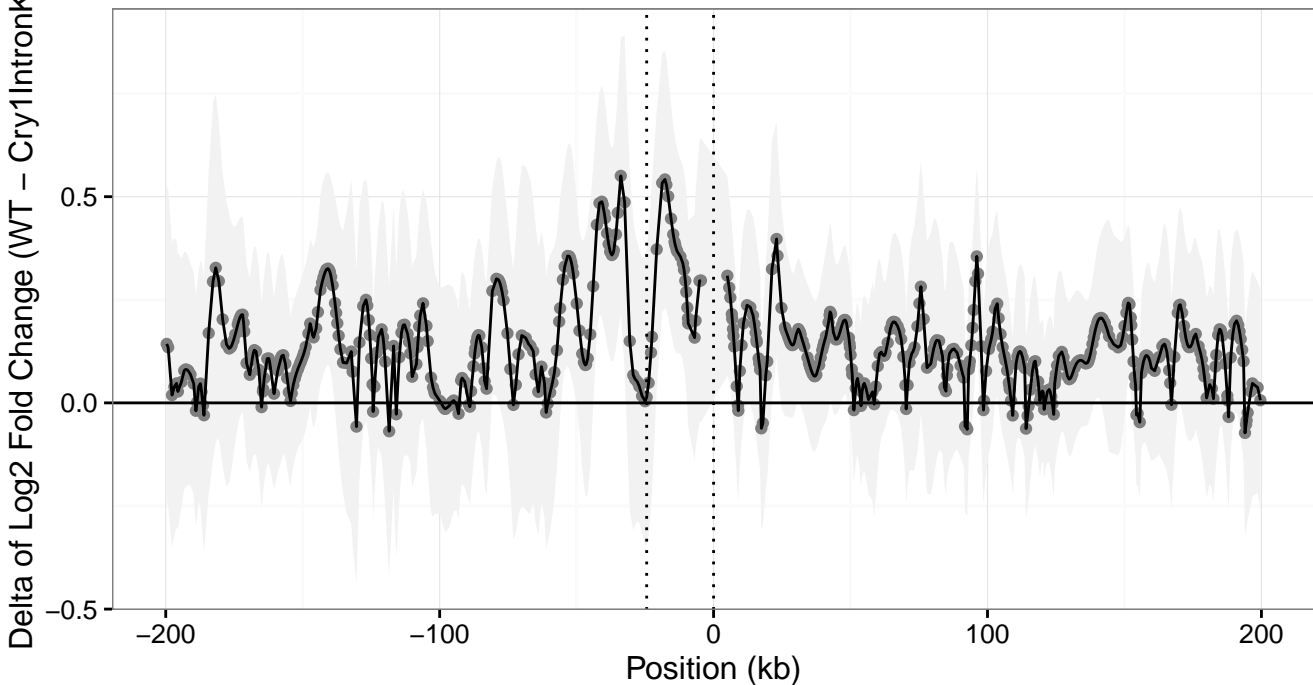
genotype  Liver_WT  Liver_Cry1IntronKO

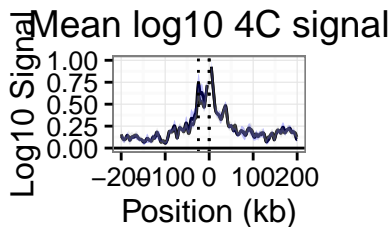
Amplitudes



tissue ● Liver_WT + Liver_Cry1IntronKO

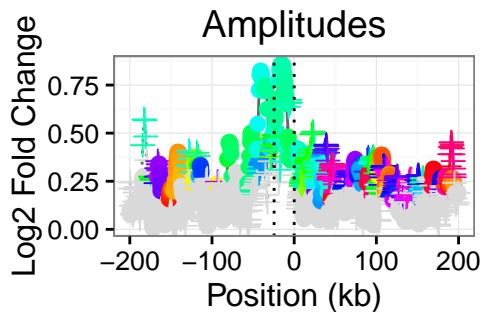
Delta of Amplitudes (WT – Cry1IntronKO)





time Liver_WT Liver_Cry1IntronKO

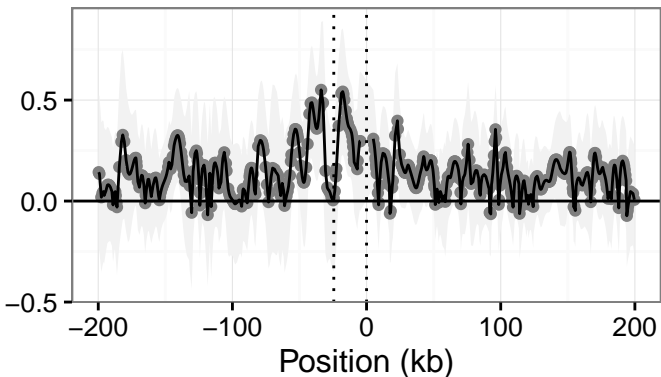
genotype Liver_WT Liver_Cry1IntronKO



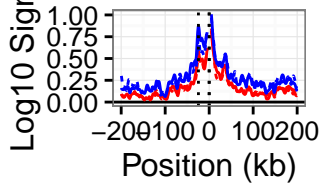
tissue ● Liver_WT + Liver_Cry1IntronKO

f Log2 Fold Change (WT - Cry1IntronKO

Delta of Amplitudes (WT - Cry1IntronKO)

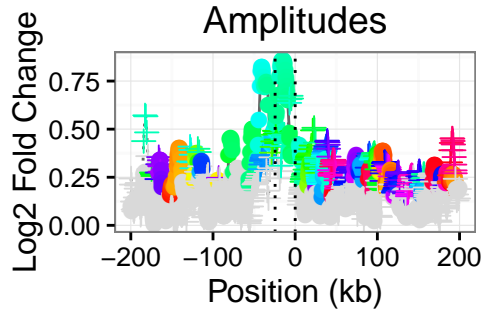


Max and min of 4C signal



time Liver_WT Liver_Cry1IntronKO

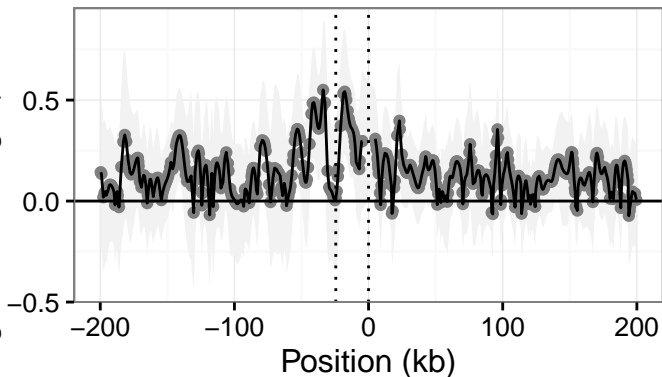
genotype Liver_WT Liver_Cry1IntronKO



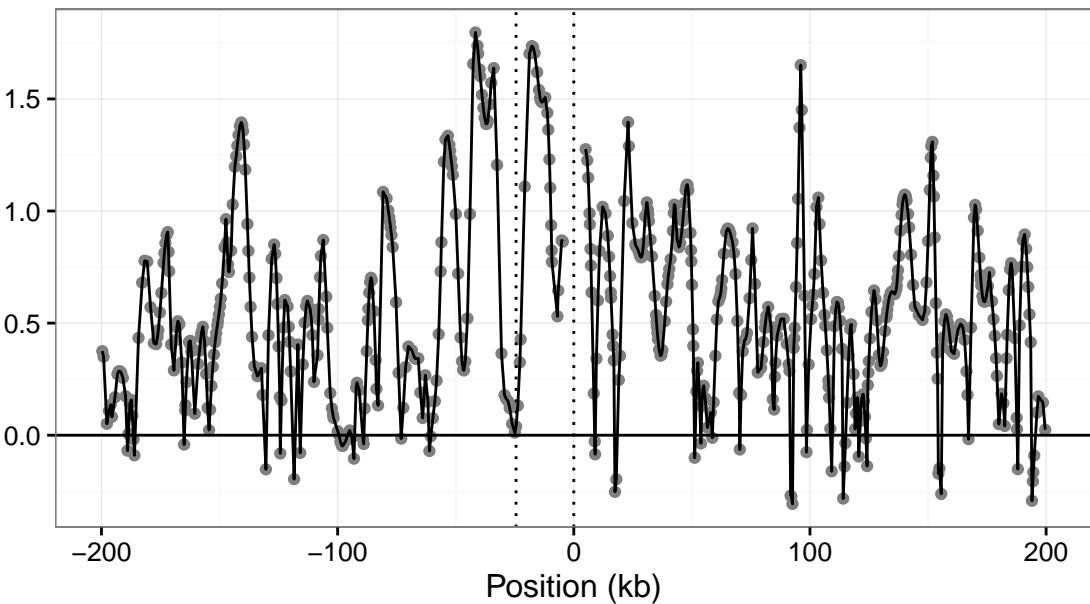
tissue Liver_WT Liver_Cry1IntronKO

f Log2 Fold Change (WT - Cry1IntronKO

Delta of Amplitudes (WT - Cry1IntronKO)



Zscore



$-\log_{10}(\text{pvalue})$

