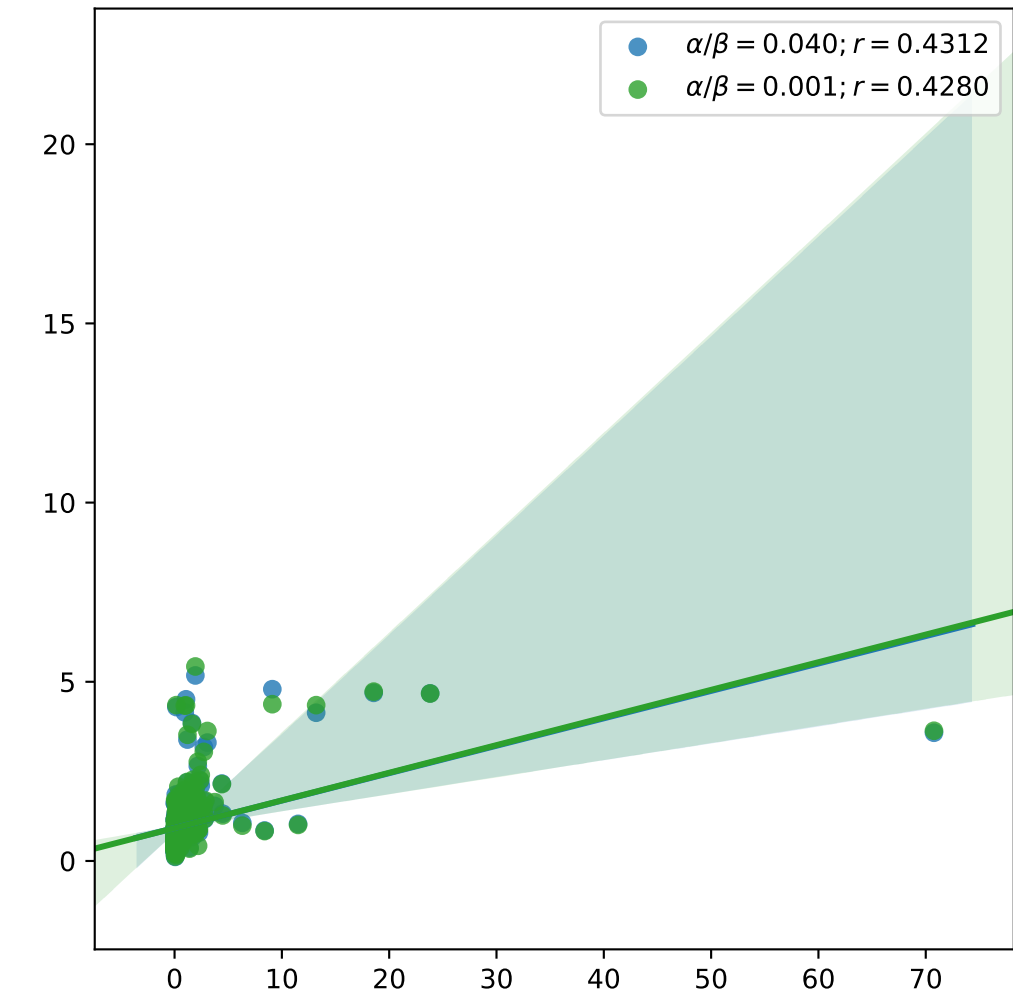
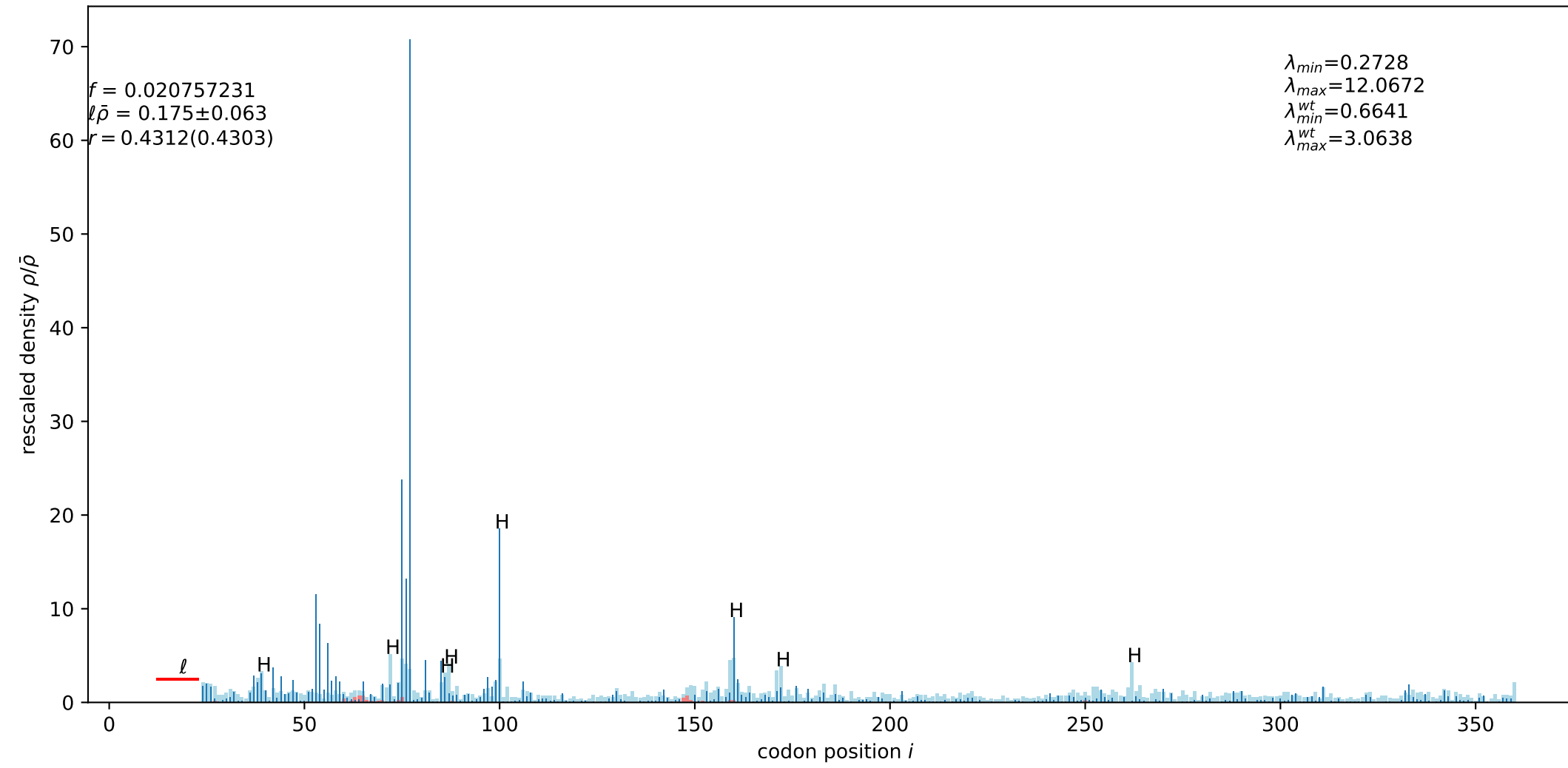


# YFL039C

3AT, full,  $\alpha/\beta=0.040000$ ,  $\beta=0.664058$ ,  $\ell=12$ ,  $\alpha\Delta t=10$ ,  $n_{rec}/N=1000$ ,  $N=337$ ,



3AT, full,  $\alpha/\beta=0.001000$ ,  $\beta=0.664058$ ,  $\ell=12$ ,  $\alpha\Delta t=10$ ,  $n_{rec}/N=1000$ ,  $N=337$ ,

